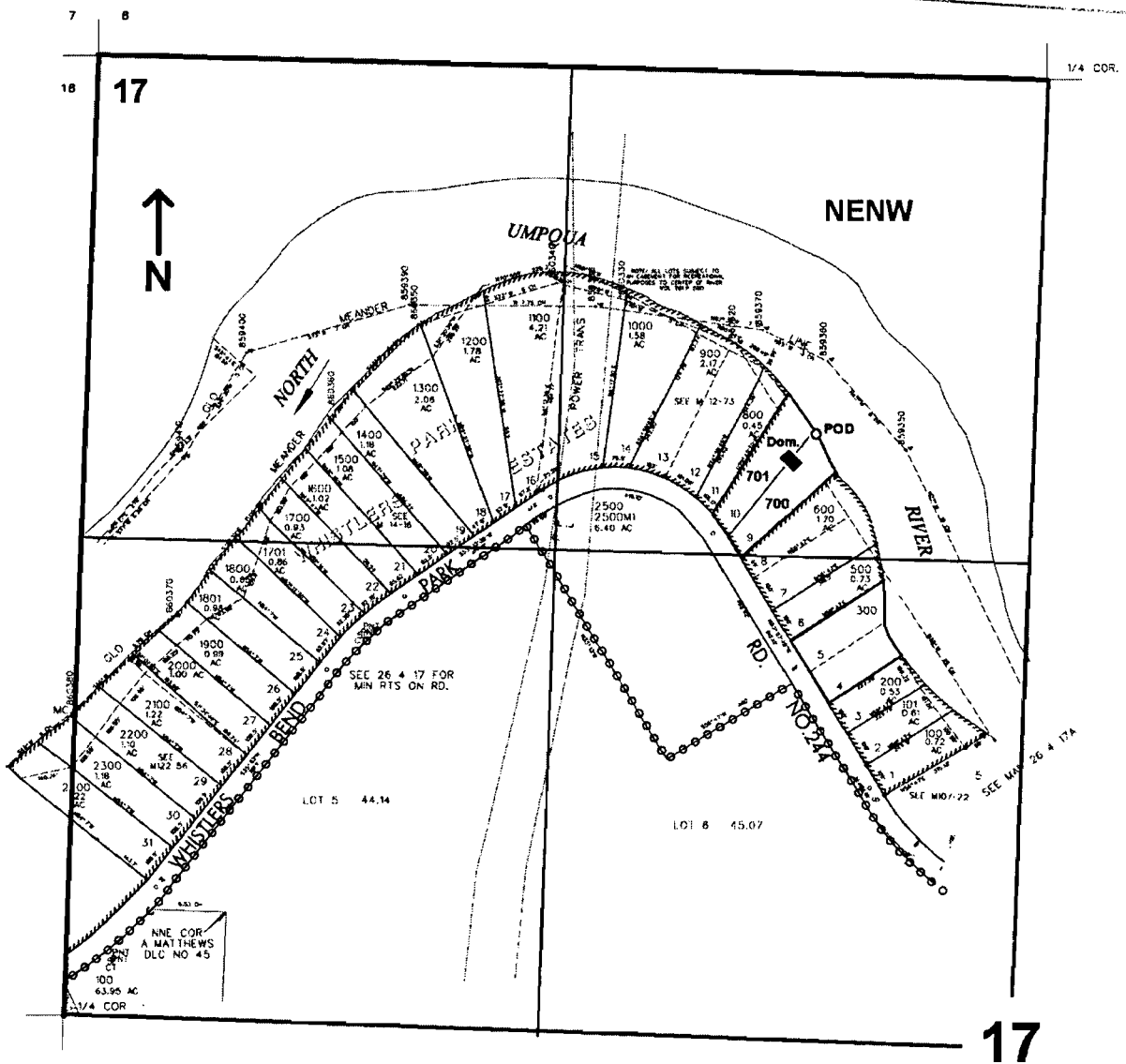


RECEIVED

SEP 12 2005

WATER RESOURCES DEPT
SALEM, OREGON

NW1/4 SEC. 17 T.26S. R.4 W W.M.
DOUGLAS COUNTY
Scale: 1" = 500'



POD is located 990 ft. S. and 600 ft. W. from the N1/4 corner of Sec. 17

app S-860415