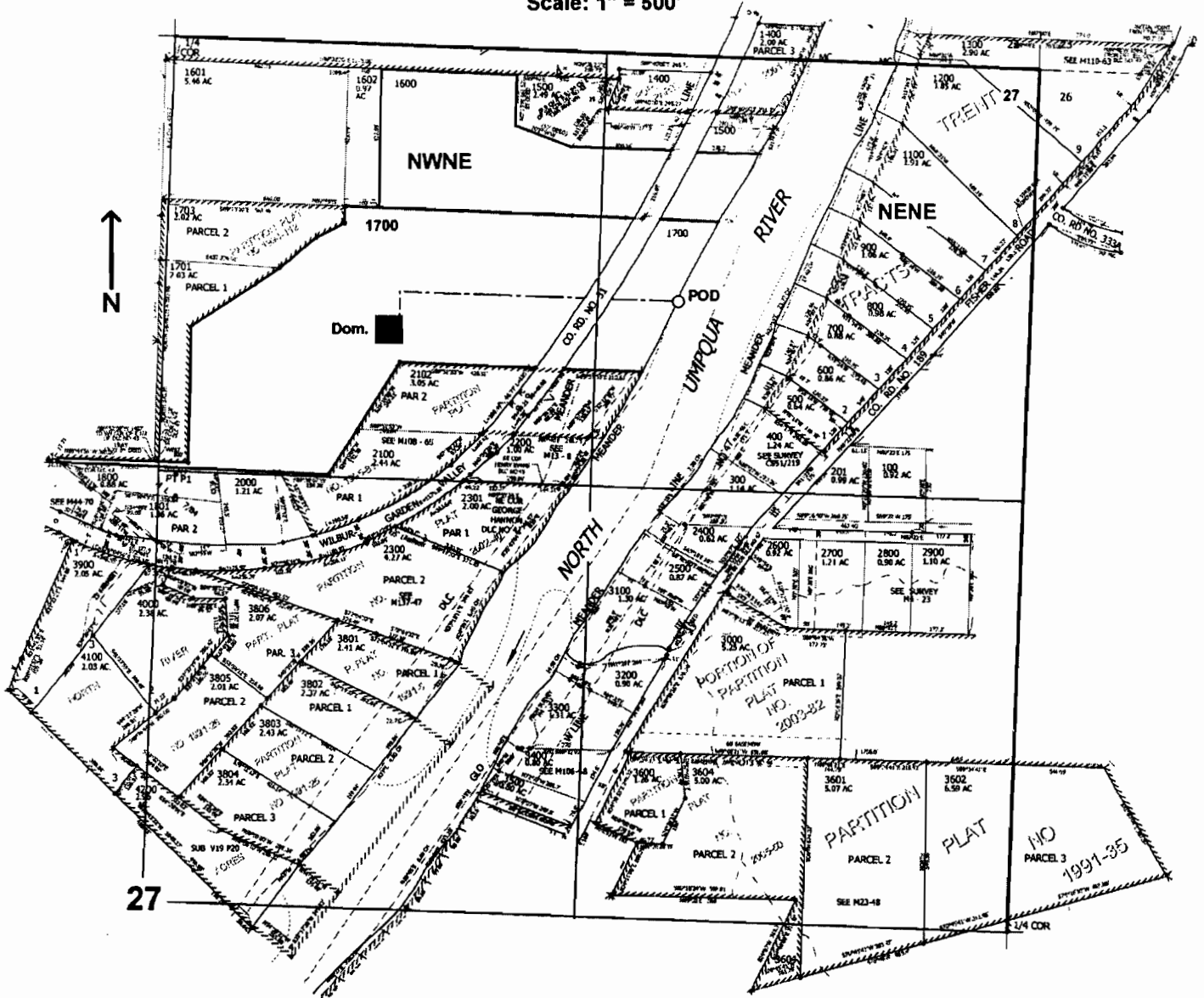


NE1/4 SEC.27 T.26S. R.6W. W.M.  
DOUGLAS COUNTY

Scale: 1" = 500'



POD is located 750 ft. S. and 1075 ft. W. from the NE corner of Sec. 27

**RECEIVED**  
JUL 11 2005  
WATER RESOURCES DEPT  
SALEM, OREGON

app no S-86372  
Permit no