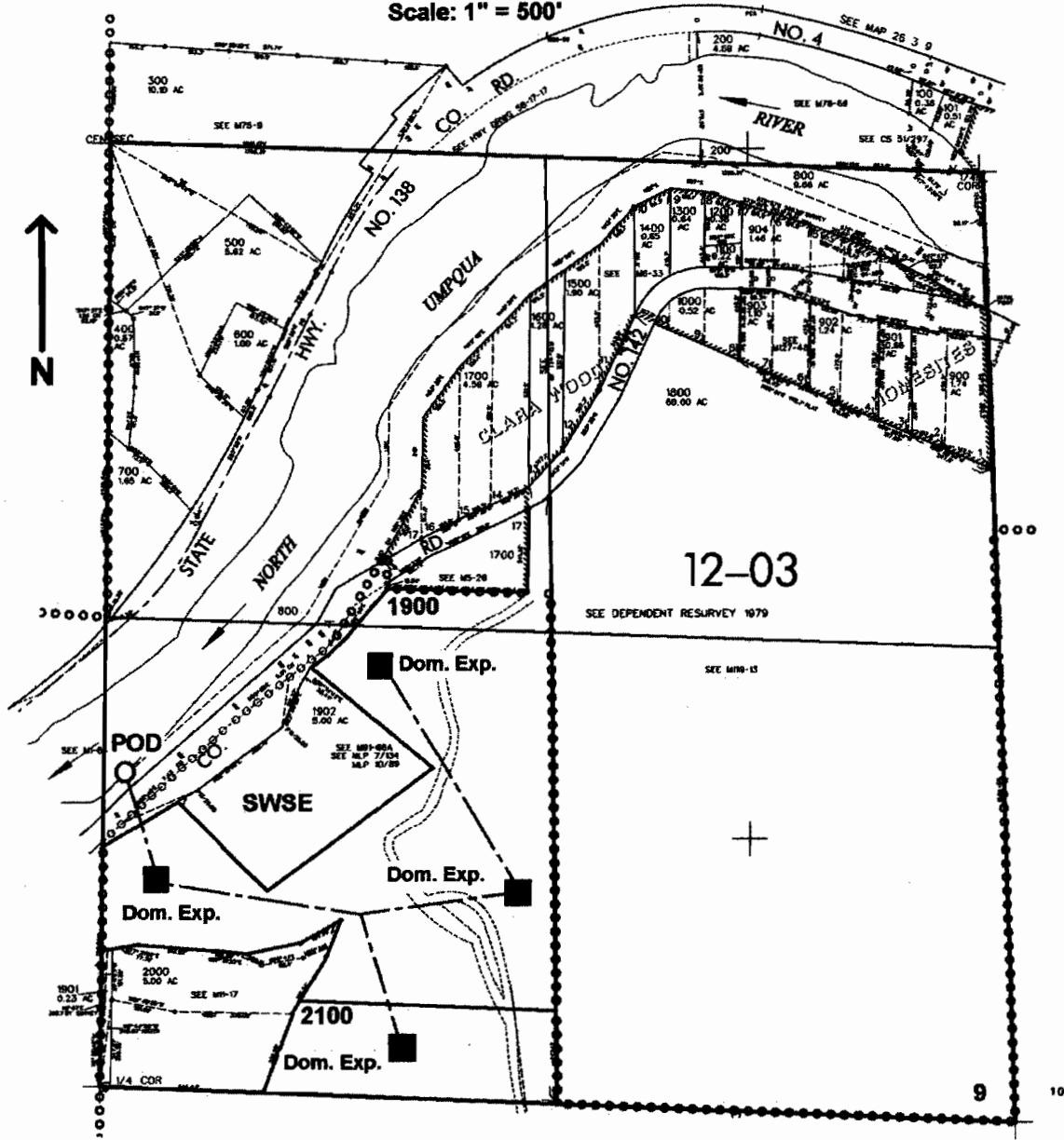


SE1/4 SEC. 9 T.26S. R. 3W W.M.  
DOUGLAS COUNTY  
Scale: 1" = 500'



POD is located 880 ft. N. and 60 ft. E. from the S. 1/4 corner of Sec. 9

app # 586267

**RECEIVED**  
APR 19 2005  
WATER RESOURCES DEPT  
SALEM, OREGON