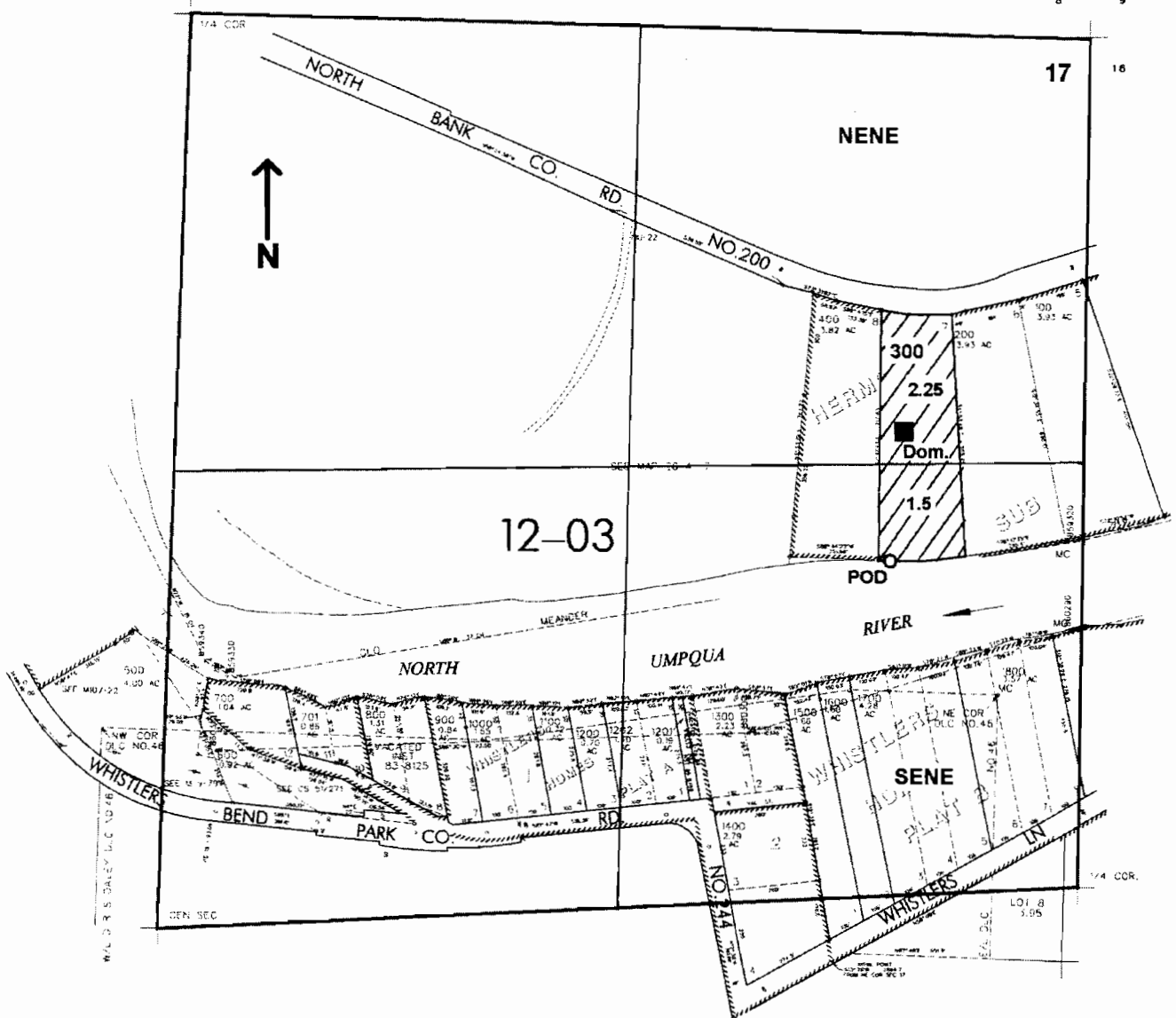


NEV4 SEC. 17 T.26S. R. 4W. W.M.

DOUGLAS COUNTY

Scale: 1" = 500'



POD is located 1560 ft. S. and 565 ft. W. from the NE corner of Sec. 17

Application 5-86283

RECEIVED
MAY - 2 2005
WATER RESOURCES DEPT
SALEM, OREGON