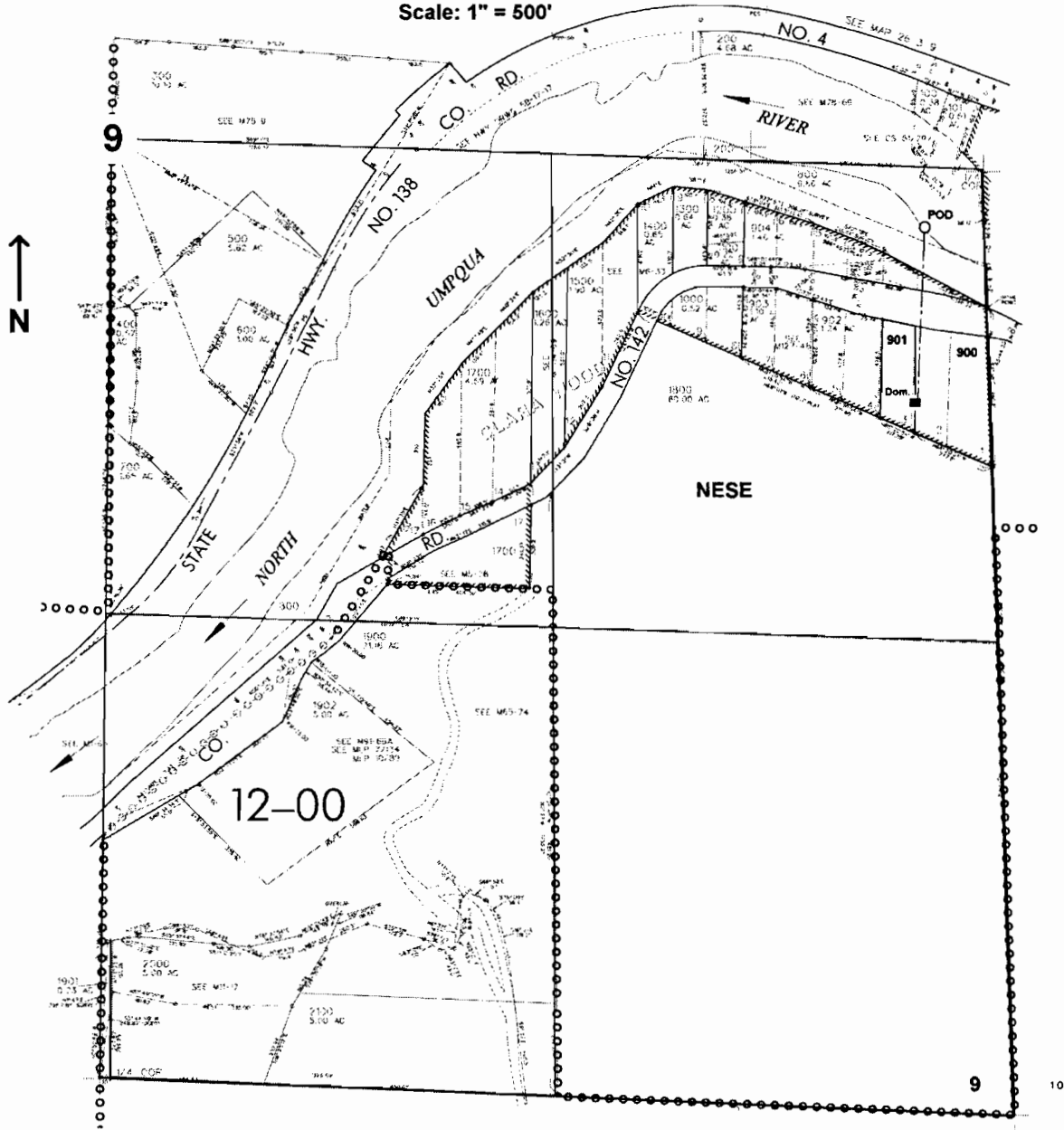


SEV4 SEC. 9 T.26S. R. 3W W.M.
DOUGLAS COUNTY

Scale: 1" = 500'



POD is located 170 ft. S. and 170 ft. W. from the E1/4 corner of Sec. 9

RECEIVED
JAN 20 2005
WATER RESOURCES DEPT
SALEM, OREGON

APP 110 S 50199