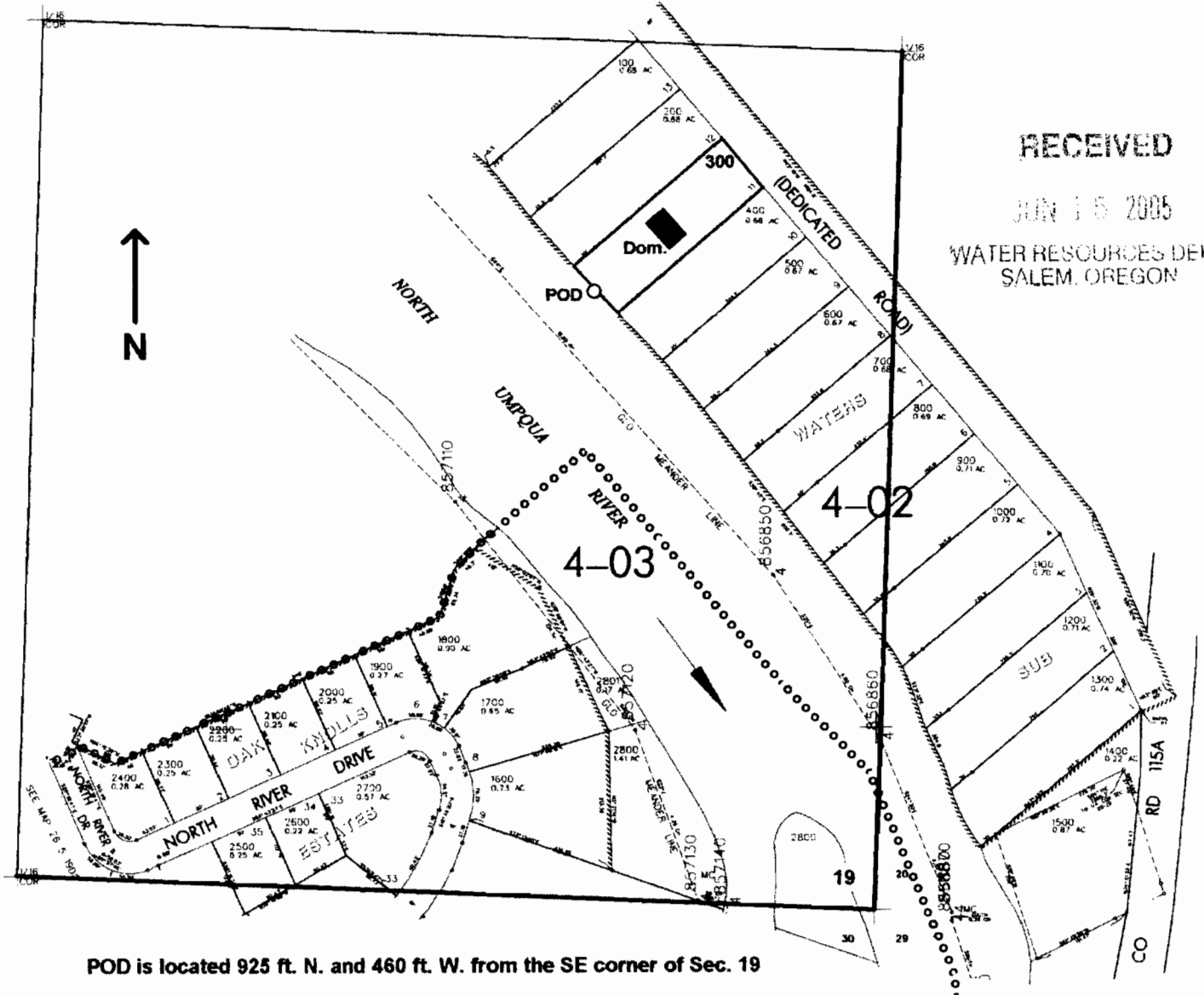


SE1/4 SE1/4 SEC. 19 T.26S. R.5 W. W.M.
DOUGLAS COUNTY
Scale: 1" = 250'

RECEIVED

JUN 15 2005

WATER RESOURCES DEP.
SALEM, OREGON



POD is located 925 ft. N. and 460 ft. W. from the SE corner of Sec. 19

S-86341