

SEC. 13 T.26S. R. 4W. W.M.
DOUGLAS COUNTY

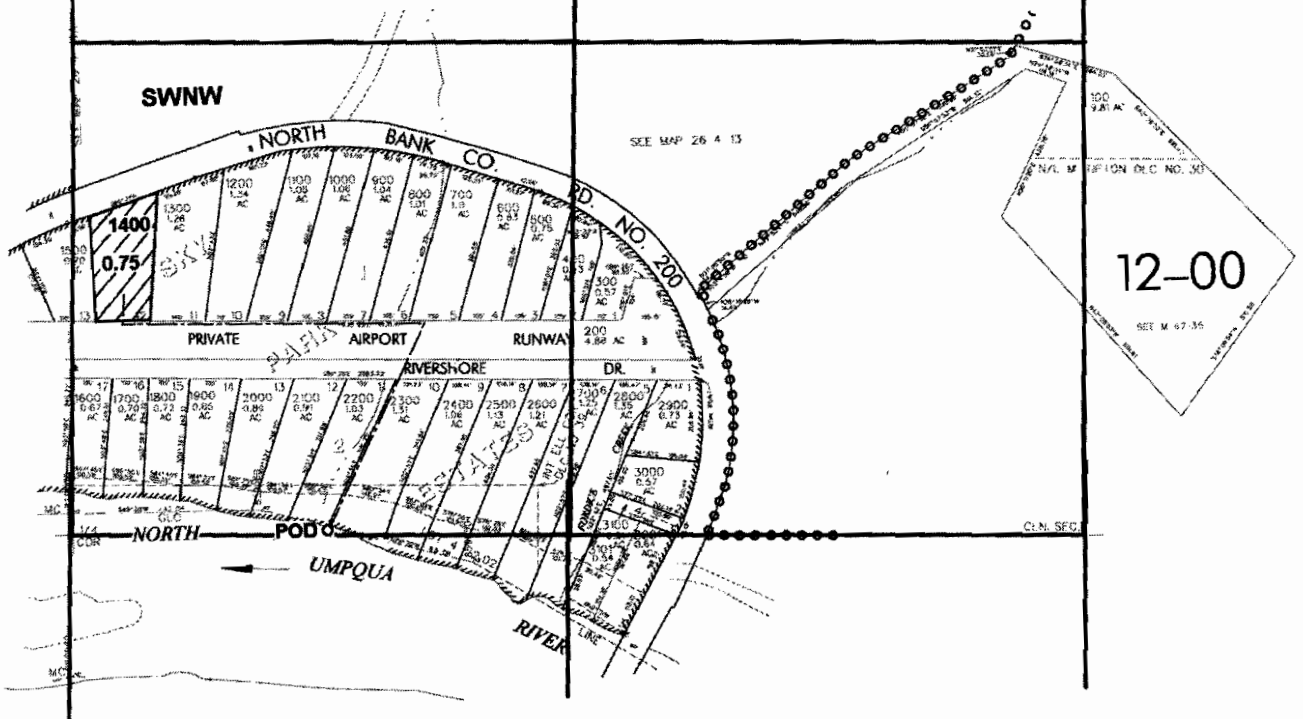
Scale: 1" = 500'

11 12

14 13



POD is located 20 ft. N. and 670 ft. E.
from the W 1/4 corner of Sec. 13



app # S86272

RECEIVED
APR 22 2005
WATER RESOURCES DEPT
SALEM, OREGON