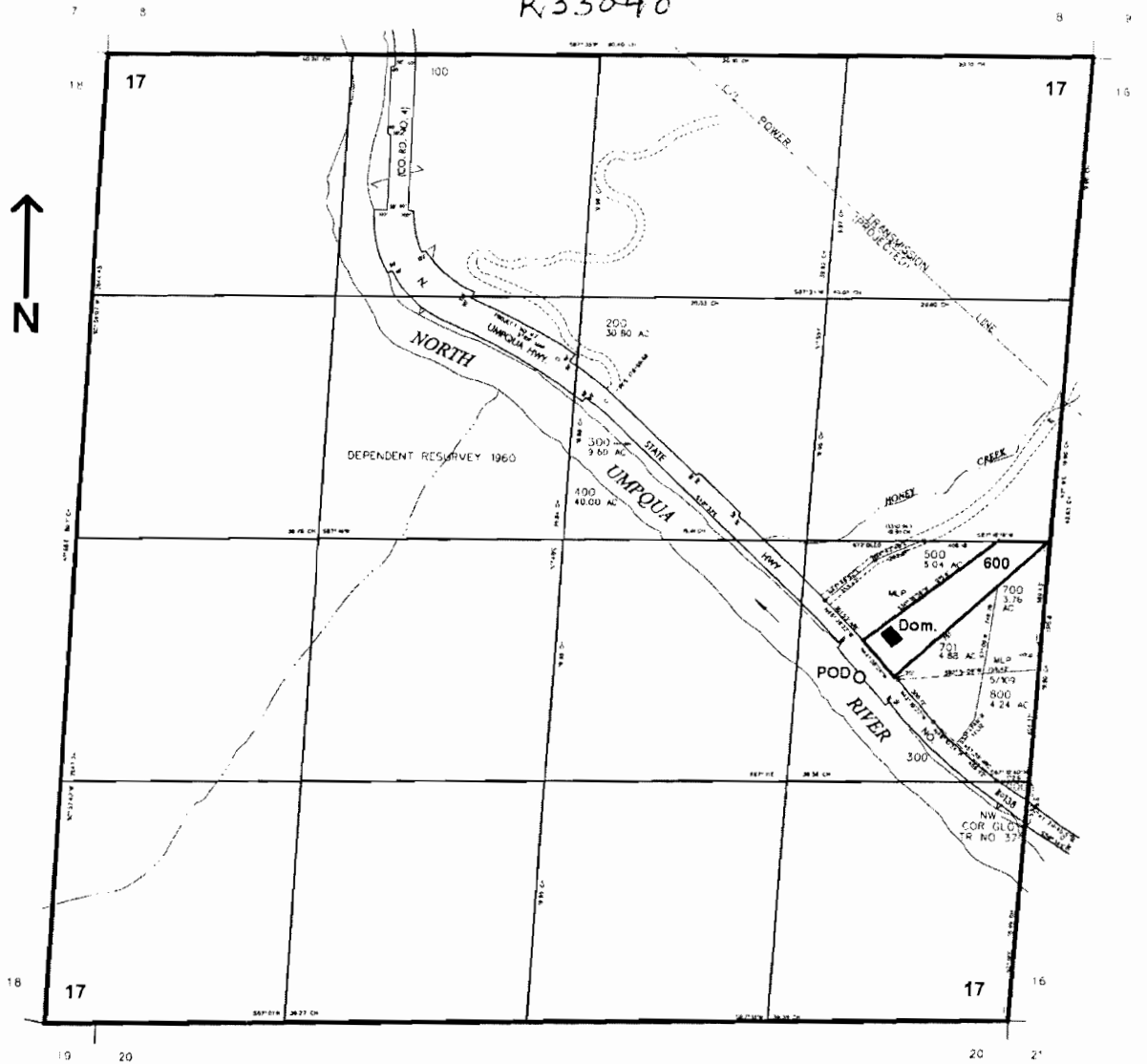


SEC. 17 T.26S. R. 2W. W.M.
DOUGLAS COUNTY

Scale: 1" = 1000'

R.33040



POD is located 750 ft. S. and 975 ft. W. from the E1/4 corner of Sec. 17

RECEIVED
FEB 1 2006
WATER RESOURCES DIVISION
DALE W. GORDON

5-86514