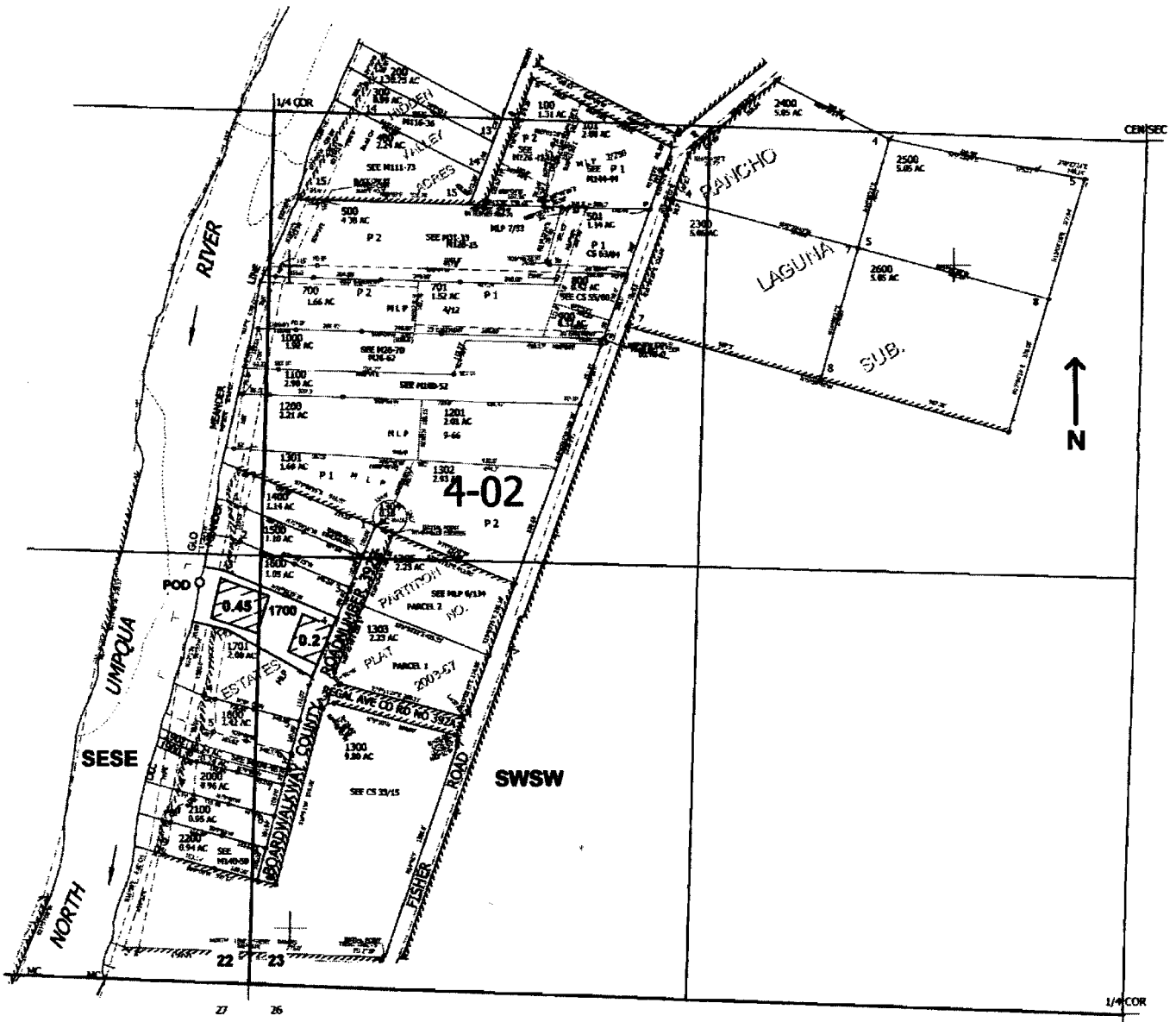


SEC. 23 T. 26S. R. 6W. W.M.
DOUGLAS COUNTY
Scale: 1" = 500'



POD is located 1200 ft. N. and 180 ft. W. from the SW corner of Sec. 23

app # S 86309

RECEIVED
MAY 18 2005
WATER RESOURCES DEPT
SALEM, OREGON