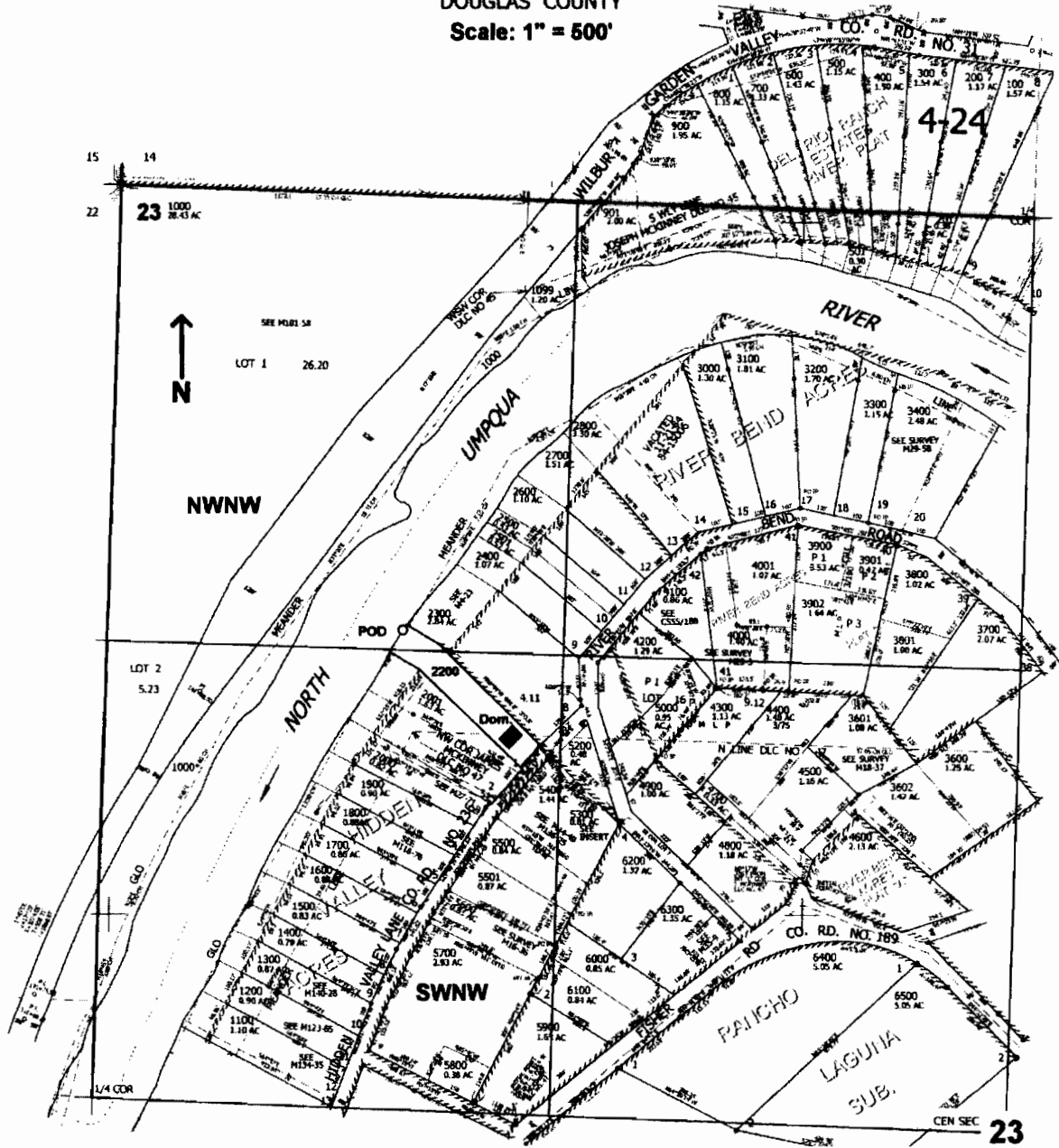


NW1/4 SEC.23 T.26S. R.6W. W.M.
 DOUGLAS COUNTY
 Scale: 1" = 500'



POD is located 1250 ft. S. and 850 ft. E. from the NW corner of Sec. 23

app # 586313

RECEIVED
 MAY 20 2005
 WATER RESOURCES DEPT
 SALEM, OREGON