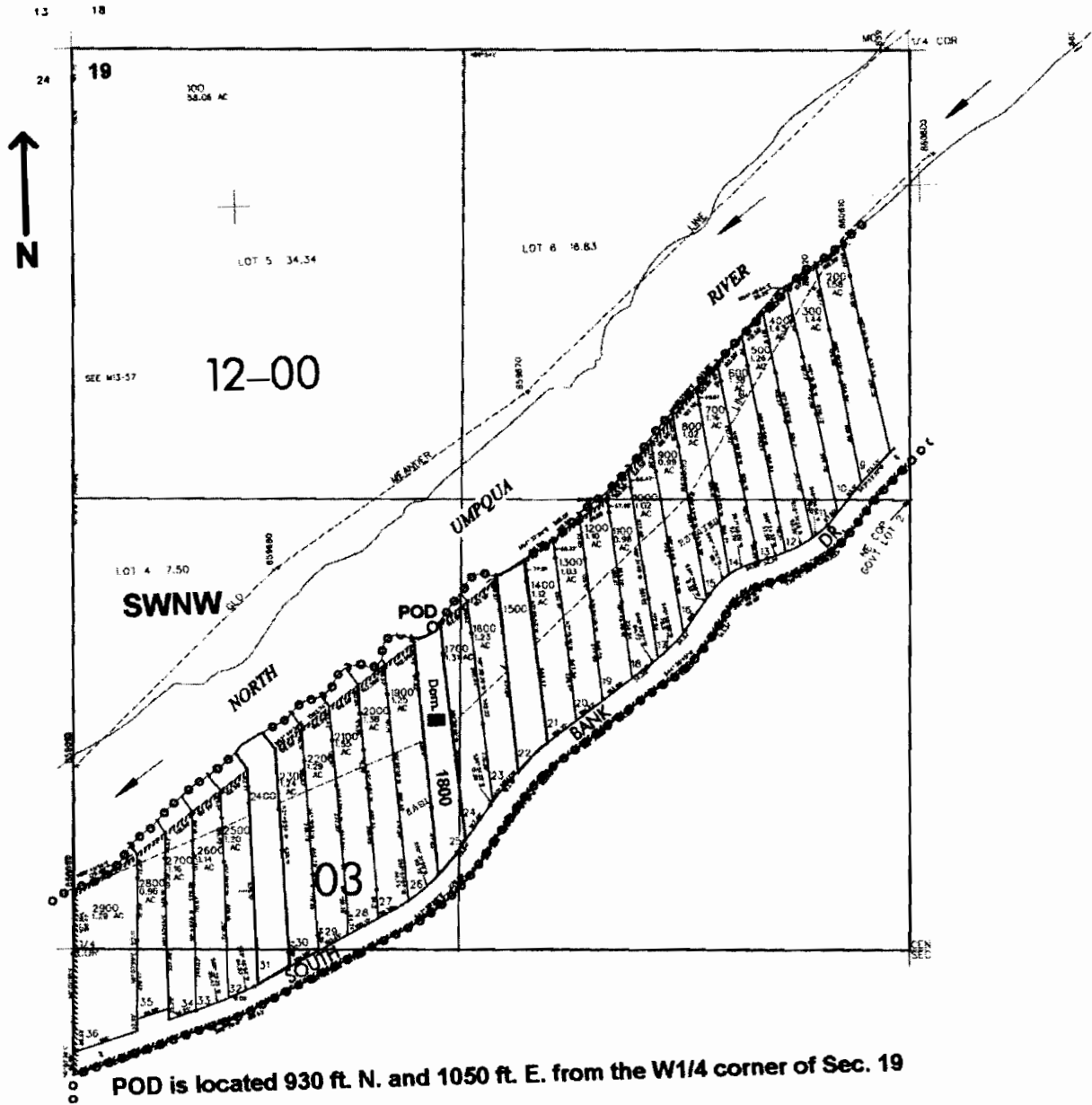


NW1/4 SEC. 19 T.26S. R.4 W W.M.  
DOUGLAS COUNTY  
Scale: 1" = 500'



POD is located 930 ft. N. and 1050 ft. E. from the W1/4 corner of Sec. 19

app # S86317

**RECEIVED**  
MAY 23 2005  
WATER RESOURCES DEPT  
SALEM, OREGON