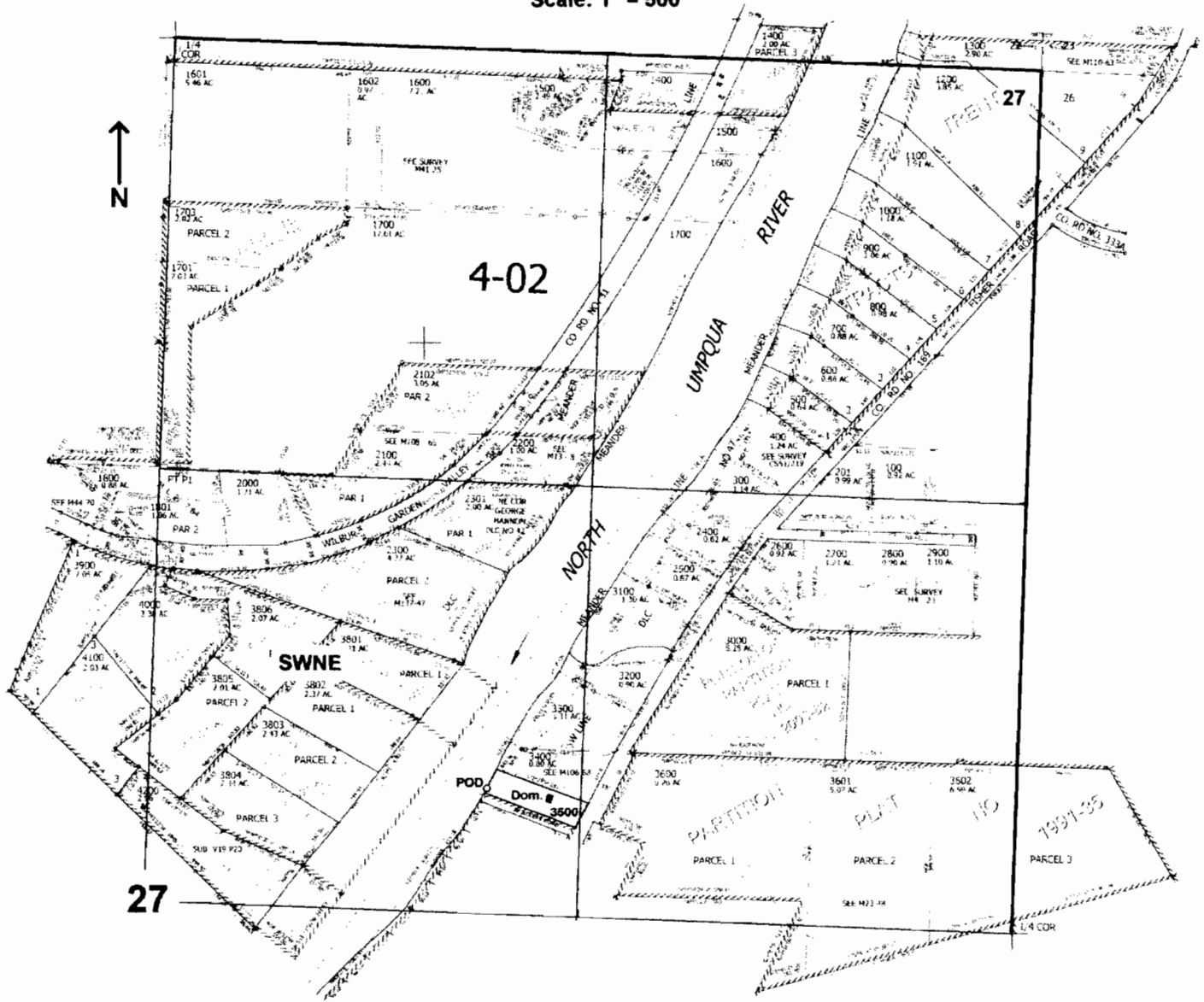


NE1/4 SEC.27 T.26S. R.6W. W.M.
DOUGLAS COUNTY
Scale: 1" = 500'



POD is located 385 ft. N. and 1030 ft. E. from the center of Sec. 27

app # S 86321

RECEIVED
MAY 25 2005
WATER RESOURCES DEPT
SALEM, OREGON