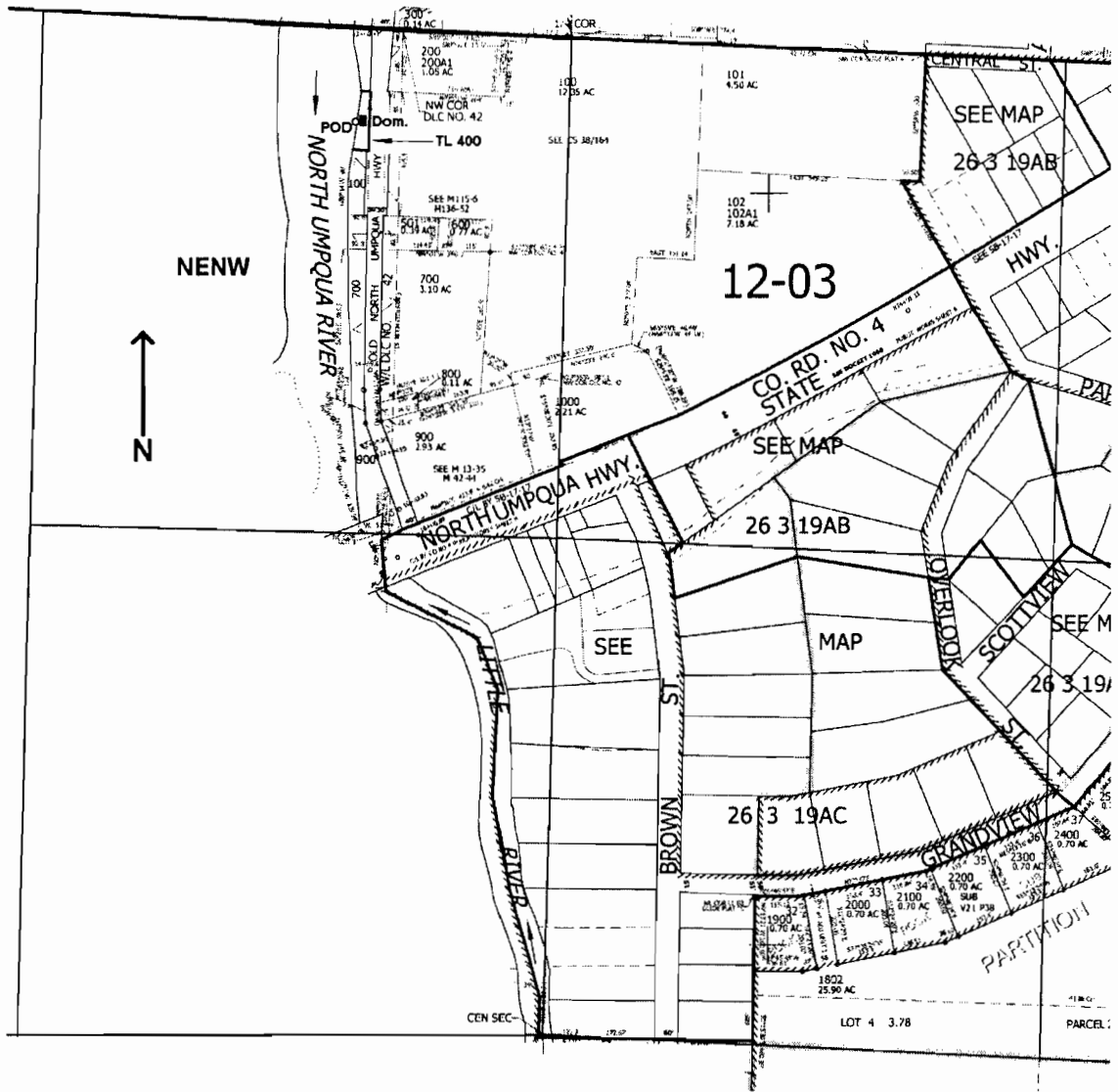


SEC.19 T.26S. R.3W. W.M.  
DOUGLAS COUNTY  
Scale: 1" = 500'



POD is located 240 ft. S. and 565 ft. W. from the N1/4 corner of Sec. 19

**RECEIVED**  
JUN 02 2005  
WATER RESOURCES DEPT  
SALEM, OREGON

App No S-86327