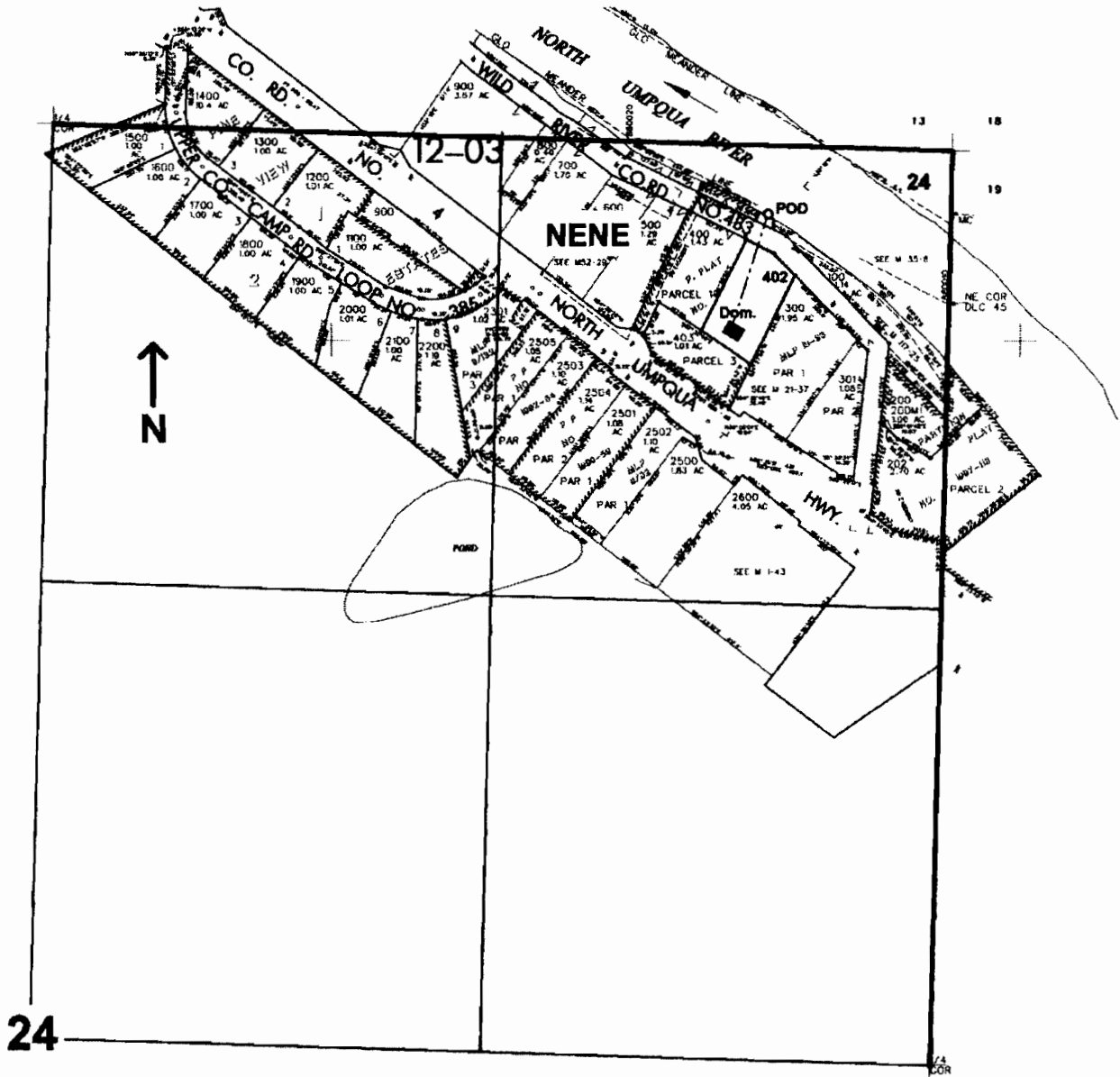


NE1/4 SEC. 24 T.26S. R.4 W W.M.  
DOUGLAS COUNTY  
Scale: 1" = 500'



POD is located 195 ft. S. and 530 ft. W. from the NE corner of Sec. 24

**RECEIVED**

JUN 08 2005

WATER RESOURCES DEPT  
SALEM, OREGON

App NO S-86335