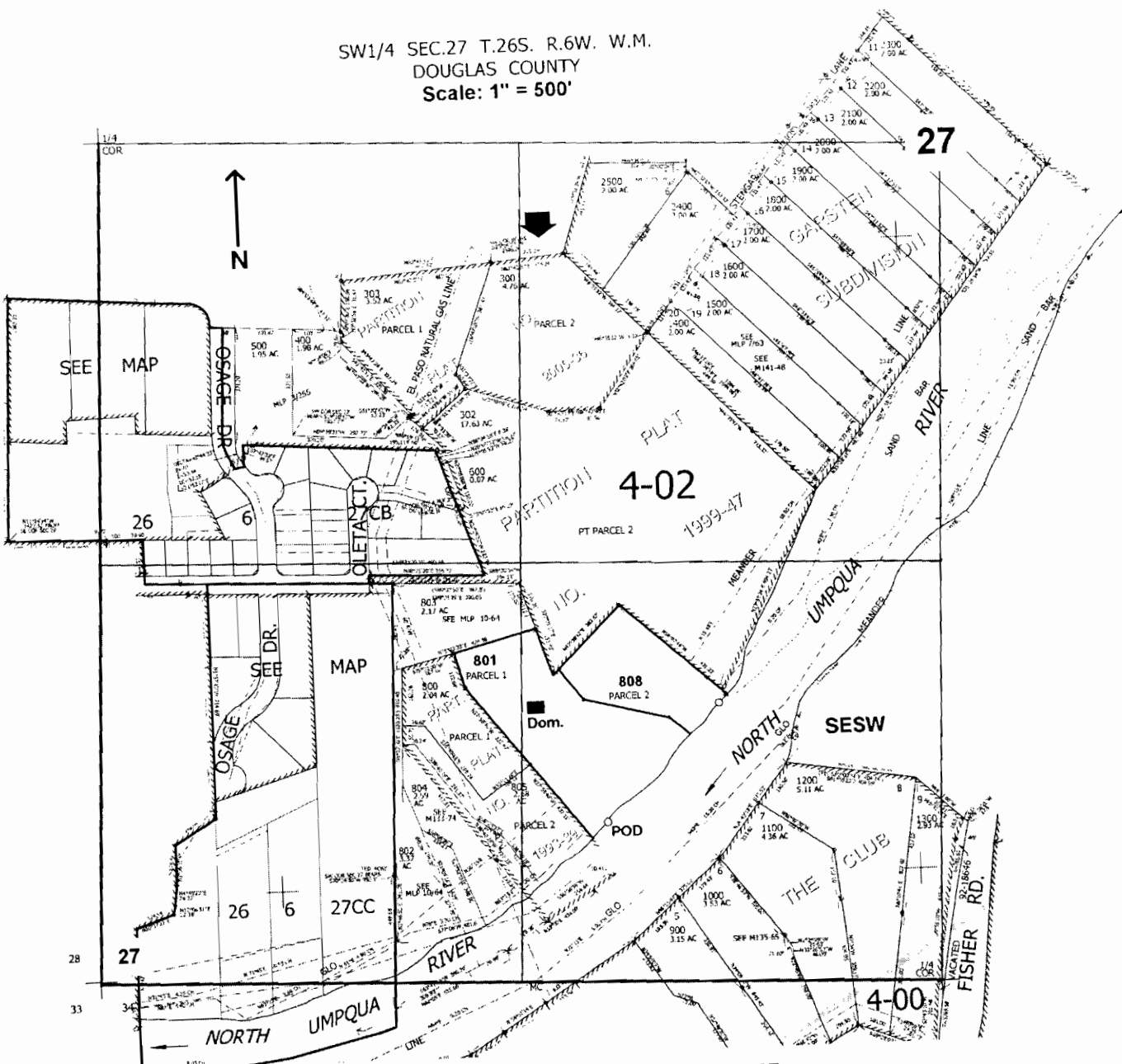


SW1/4 SEC.27 T.26S. R.6W. W.M.
 DOUGLAS COUNTY
 Scale: 1" = 500'



POD - 500 ft. N. and 1040 ft. W. from S1/4 corner of Sec. 27

RECEIVED
 JUN 10 2015
 WATER RESOURCES DEPT
 SALEM, OREGON

03 239