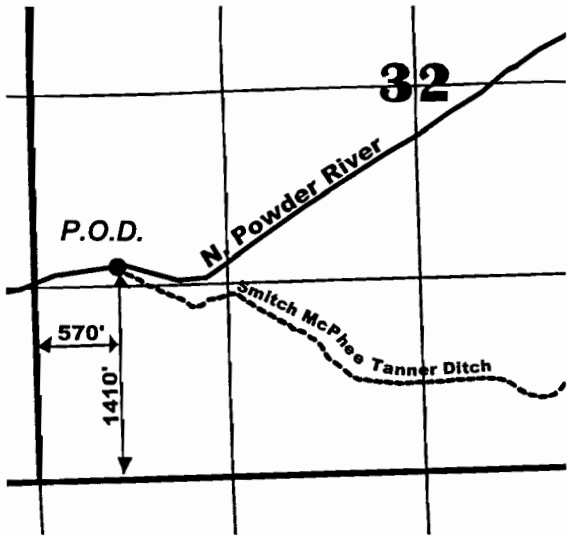
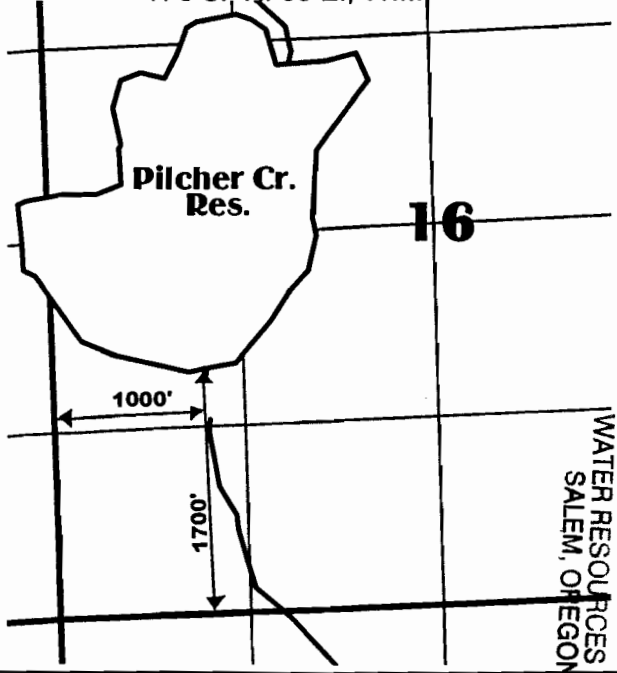


T. 6 S. R. 39 E., W.M.



T. 6 S. R. 38 E., W.M.

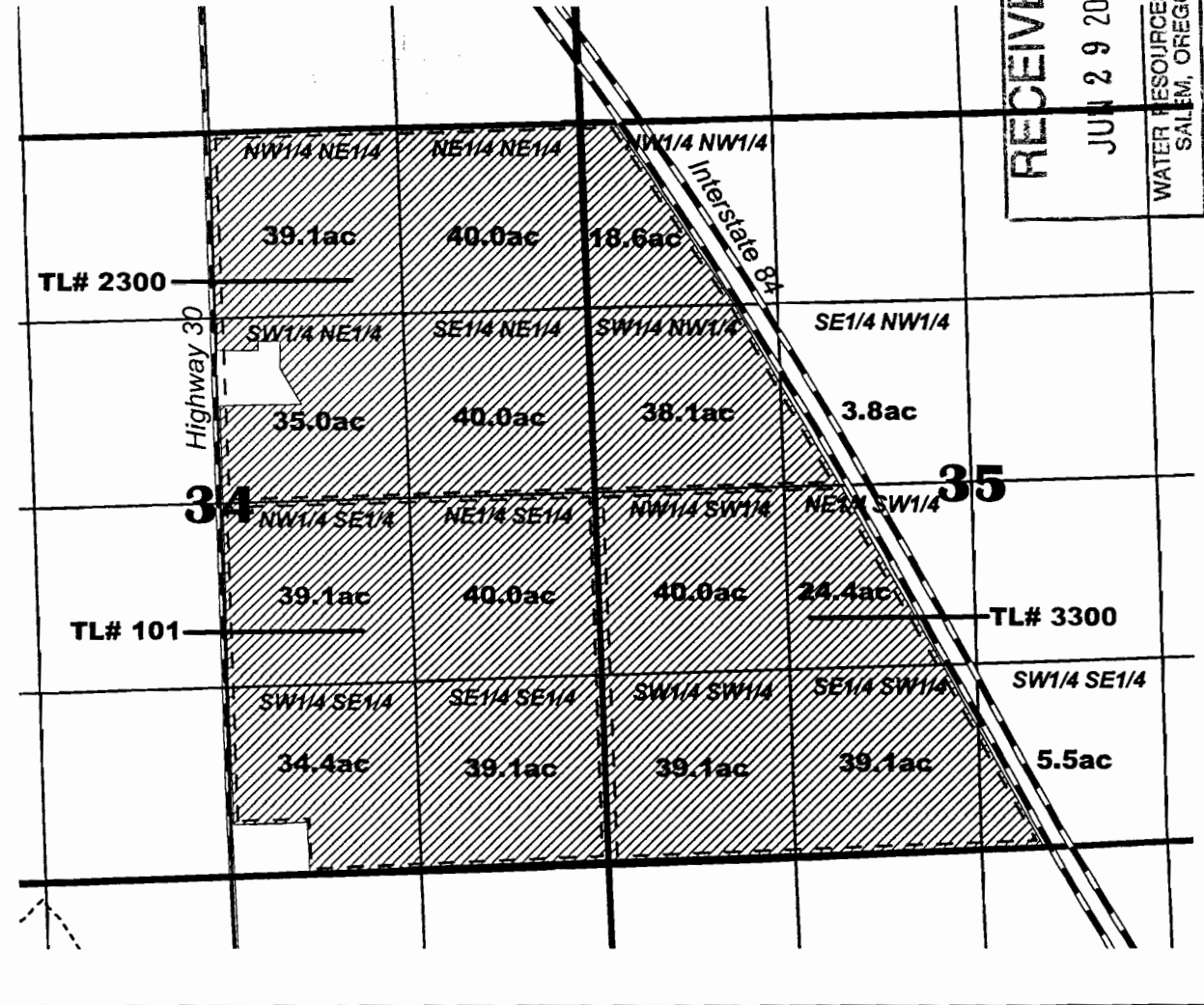


WATER RESOURCES DEPT
SALEM, OREGON

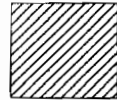
JUN 16 2006

RECEIVED

T. 6 S. R. 39 E., W.M.



RECEIVED
JUN 29 2006
WATER RESOURCES DEPT
SALEM, OREGON



SUPPLEMENTAL IRRIGATION

MAP TO ACCOMPANY APPLICATION
FOR PERMIT TO APPROPRIATE SURFACE
WATER FOR SUPPLEMENTAL IRRIGATION



Applicant: Jason Williams

Scale: 1" = 1320'

Appnos-86631