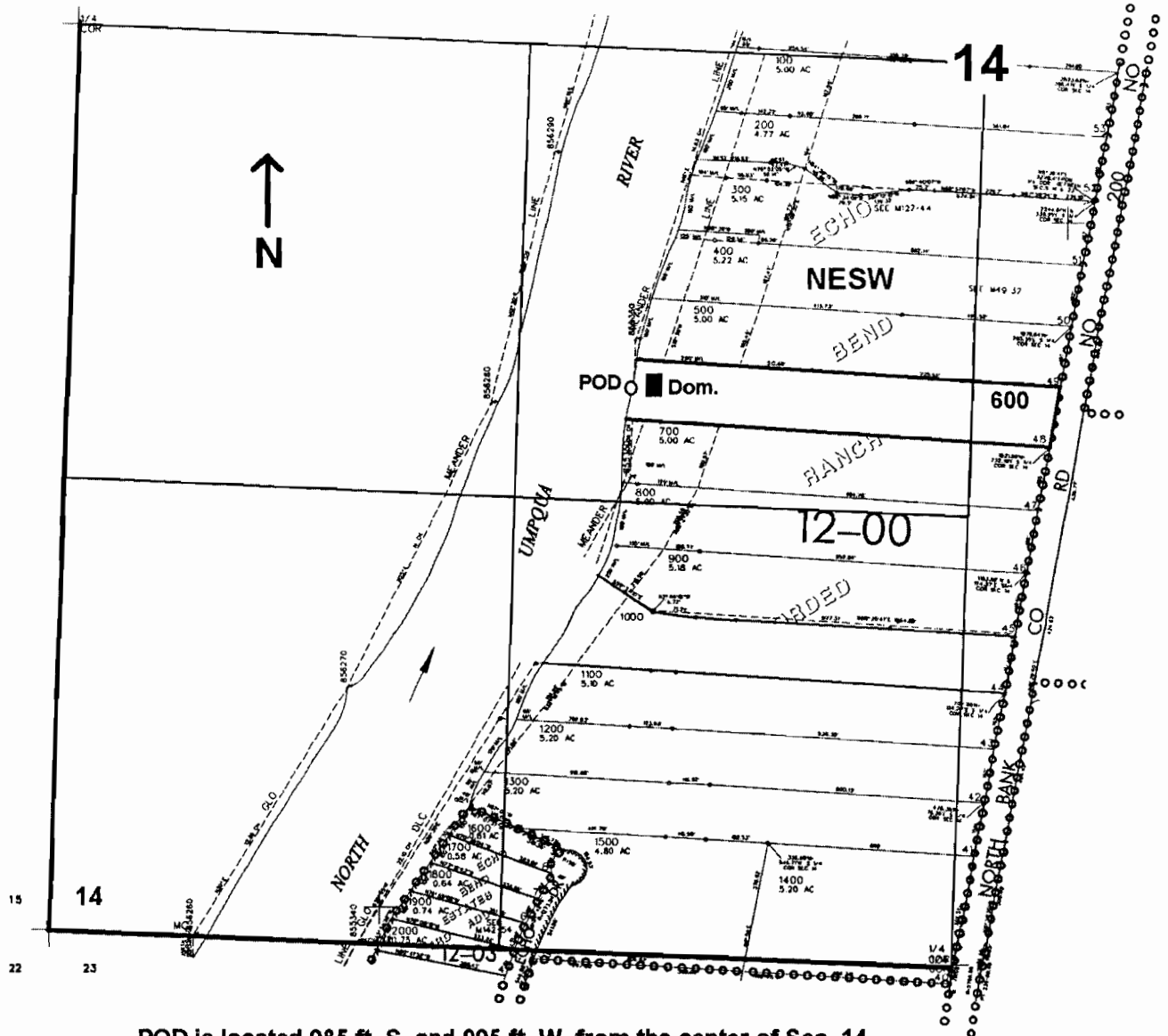


SW/4 SEC. 14 T.26S. R.5 W W.M.  
DOUGLAS COUNTY  
Scale: 1" = 500'



POD is located 985 ft. S. and 995 ft. W. from the center of Sec. 14

RECEIVED  
JUL 20 2005  
WATER RESOURCES DEPT  
SALEM, OREGON

S-86383