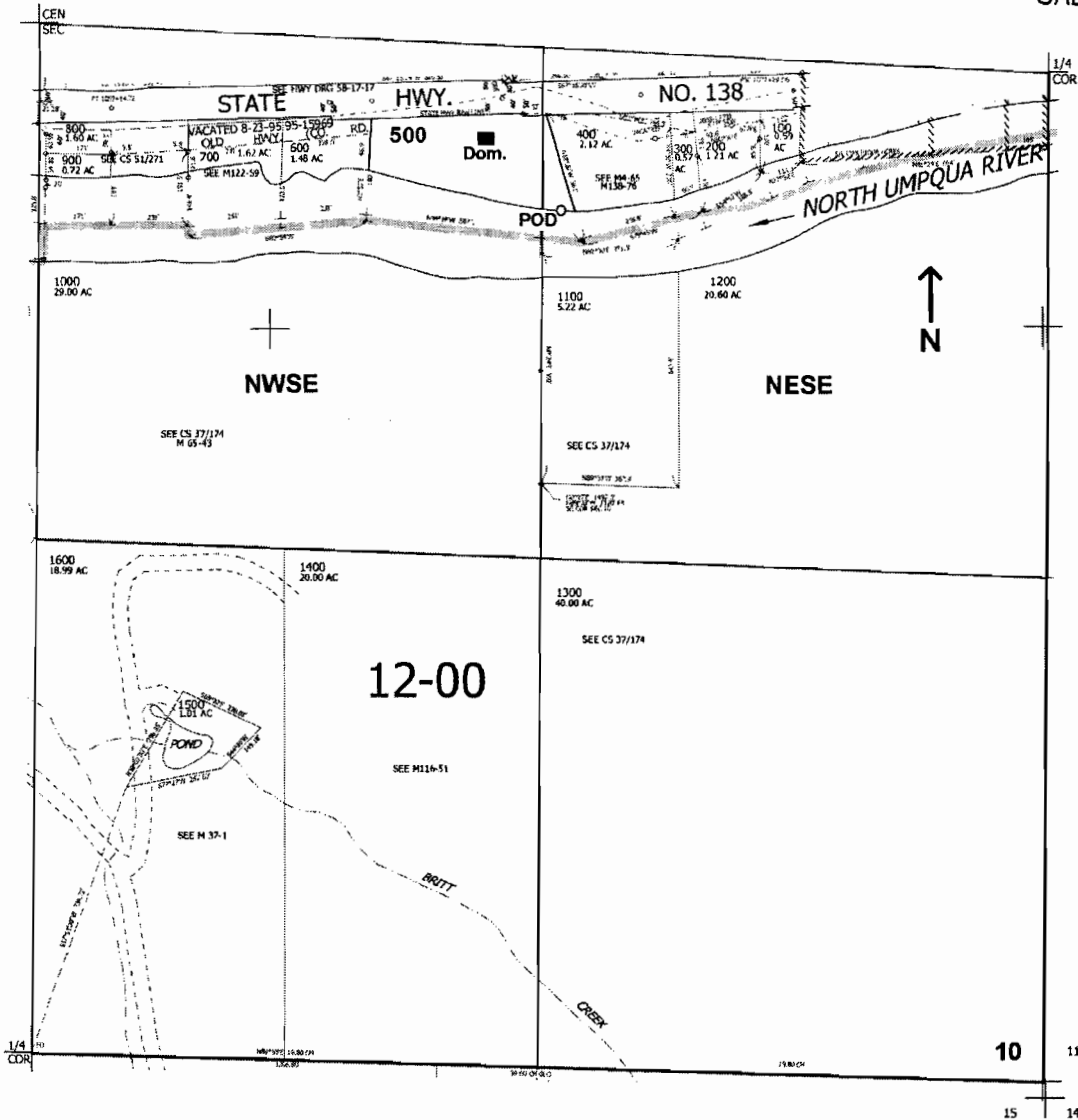


RECEIVED

JUL 13 2005

WATER RESOURCES DEPT
SALEM, OREGON

SE1/4 SEC.10 T.26S. R.3W. W.M.
DOUGLAS COUNTY
Scale: 1" = 500'



POD is located 350 ft. S. and 1250 ft. W. from the E1/4 corner of Sec. 10

app no 5-86373
Permit no