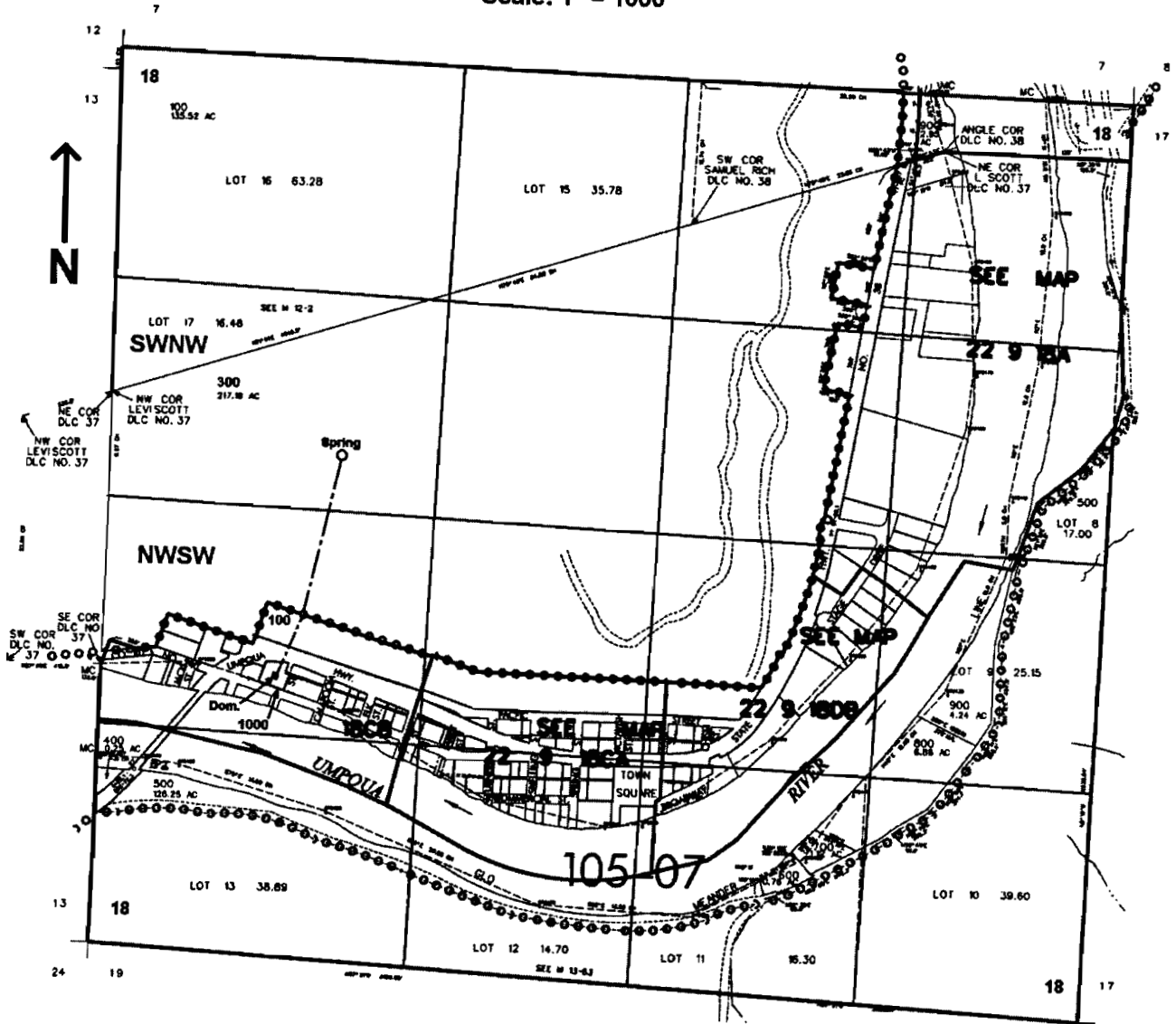


SEC. 18 T.22S. R. 9W. W.M.
DOUGLAS COUNTY

Scale: 1" = 1000'



Spring is located 2275 ft. S. and 1350 ft. E. from the NW corner of Sec. 18

Appl. 5-86467

Permit

RECEIVED
DEC 20 2005
WATER RESOURCES DEPT
SALEM, OREGON