

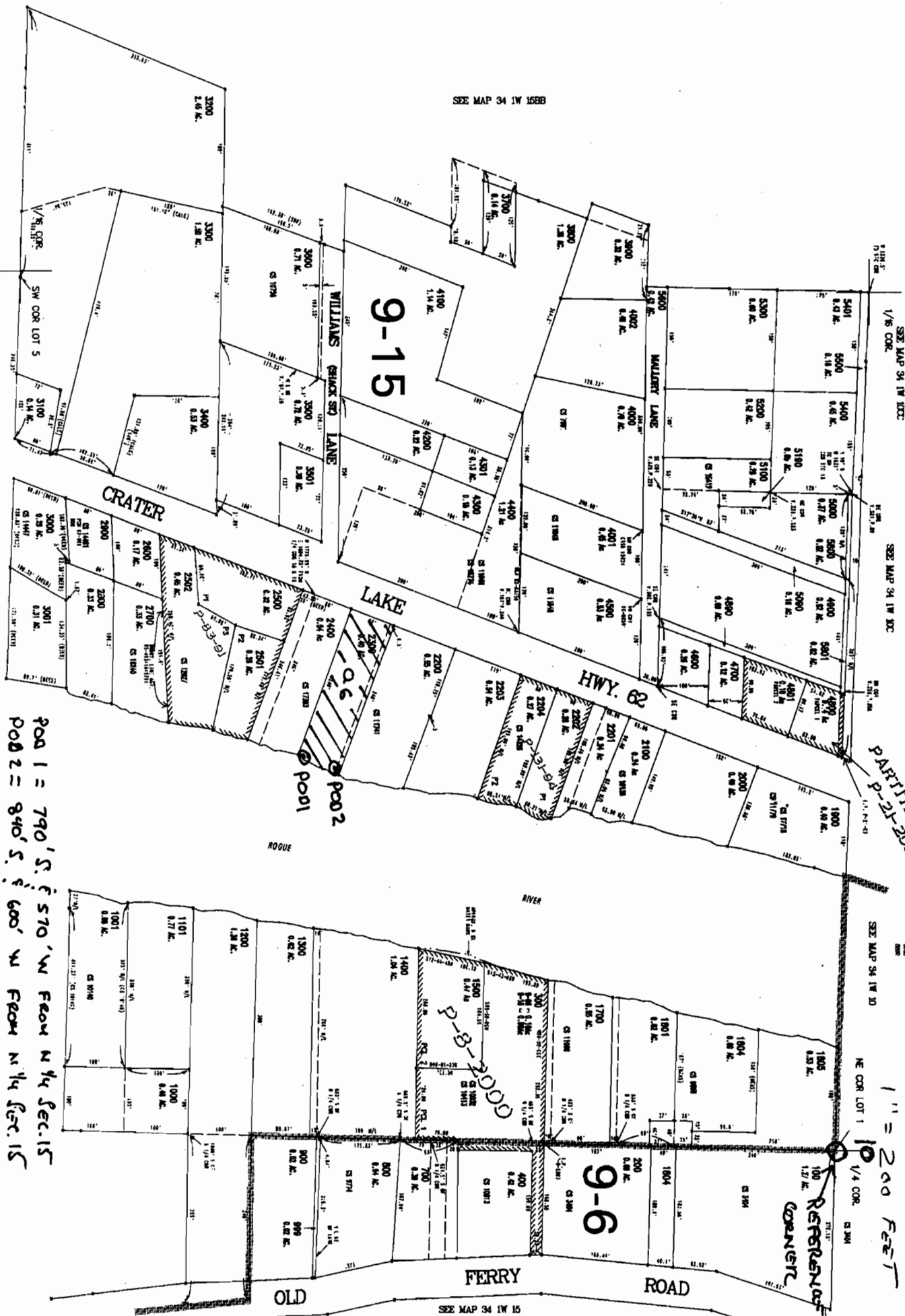
THIS MAP WAS PREPARED FOR
ASSESSMENT PURPOSE ONLY

NE 1/4 NW 1/4 SEC 15 T34S R1W W.M.
JACKSON COUNTY
T-20

Work Copy 34 1W 15BA
SHADY COVE

REVISOR ATTORNEY
SCALE

1" = 200 FEET



SEE MAP 34 1W 15BB

SEE MAP 34 1W 15

APPNO S-516281 Pennut NO S-54374

POB 1 = 790' S. of 570' W FROM NW 1/4 SEC 15
POB 2 = 840' S. of 600' W FROM NW 1/4 SEC 15

34 1W 15BA