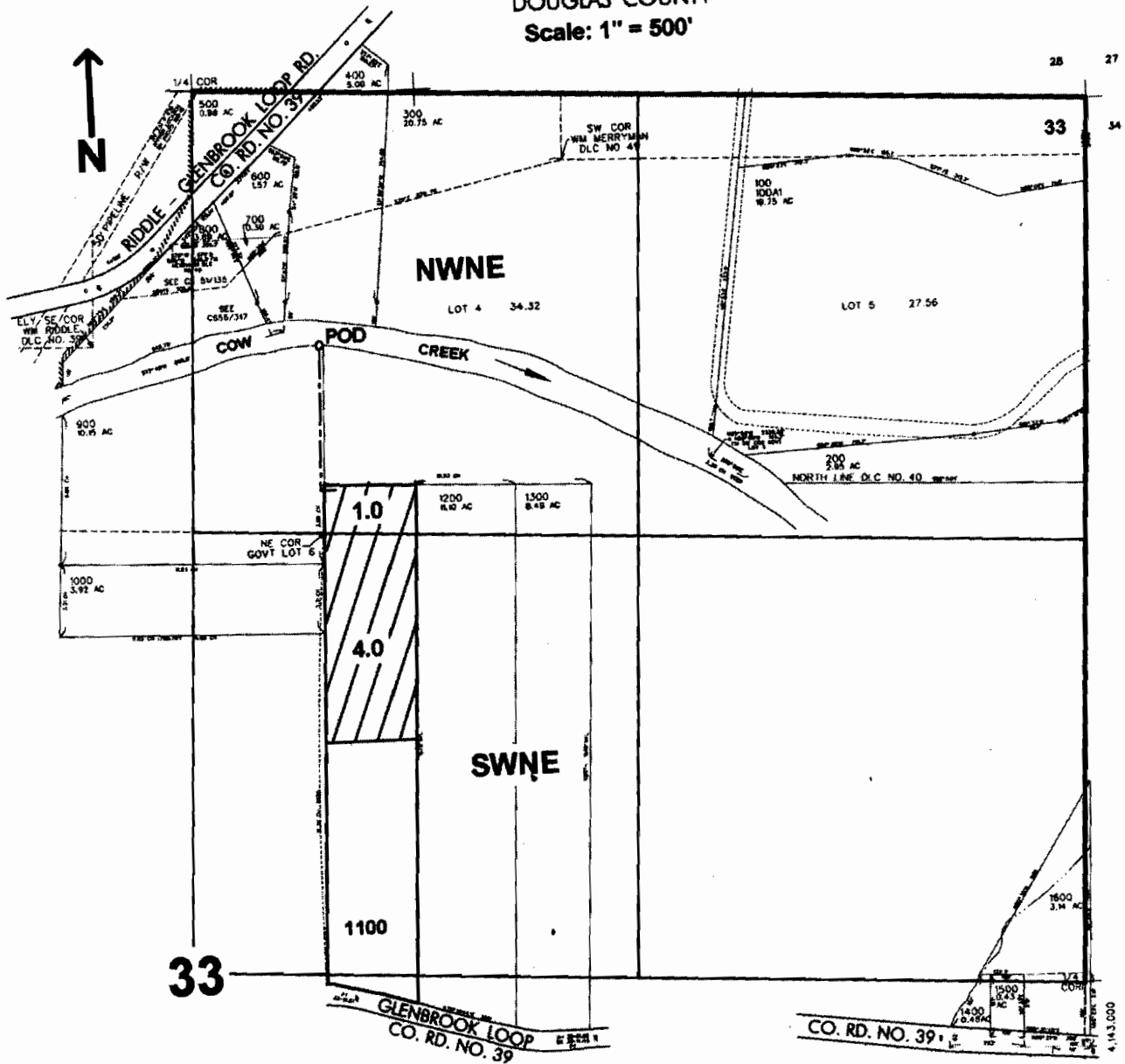


NE1/4 SEC. 33 T.30S. R.6 W. W.M.
DOUGLAS COUNTY
Scale: 1" = 500'



POD is located 750 ft. S. and 380 ft. E. from the N.1/4 corner of Sec. 33

RECEIVED
JUN 21 2006
WATER RESOURCES DEPT
SALEM, OREGON

2005-86624 Permit no S-54377