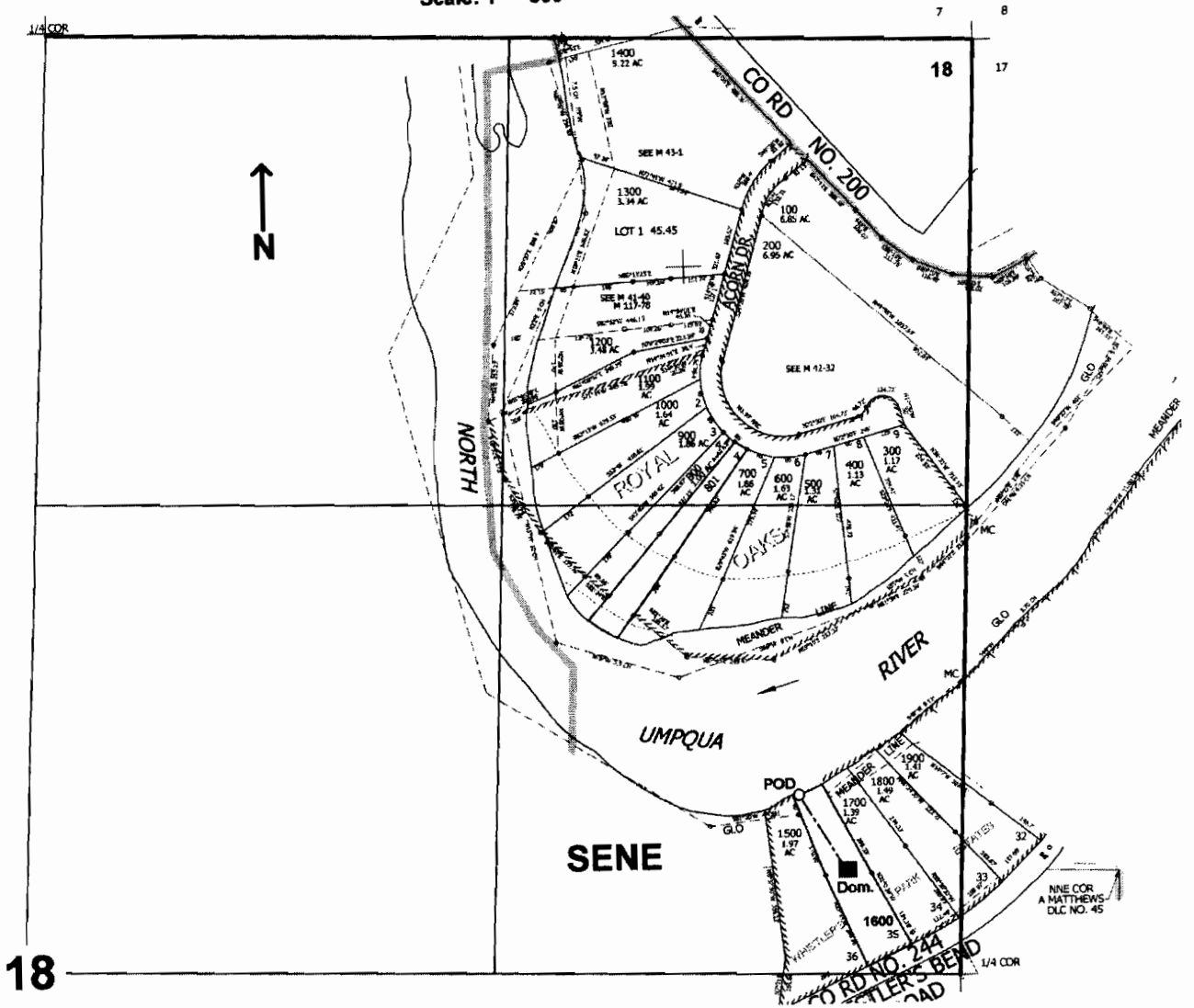


NE1/4 SEC.18 T.26S. R.4W. W.M.
 DOUGLAS COUNTY
 Scale: 1" = 500'



POD is located 505 ft. N. and 460 ft. W. from the E1/4 corner of sec. 18

RECEIVED
 AUG 09 2006
 WATER RESOURCES DEPT
 SALEM, OREGON

200005-81065