

WVW
copy

SEC. 3 T10S R6W W1W1
POLK COUNTY
See Map 9.6.34

Scale 1" = 400'

33

34
35

4

3

3
401
93.55 AC.

100
83.27 AC.

2

LOT 4787 AC.

LOT 4824 AC.

LOT 4859 AC.

LOT 4894 AC.

2-28

See Map 10.6.2

500
333.00 AC.

700
93.80 AC.

700
80.00 AC.

ROAD LOCATED FROM N 1/4 CORNER
178 FE WEST
55 FE SOUTH

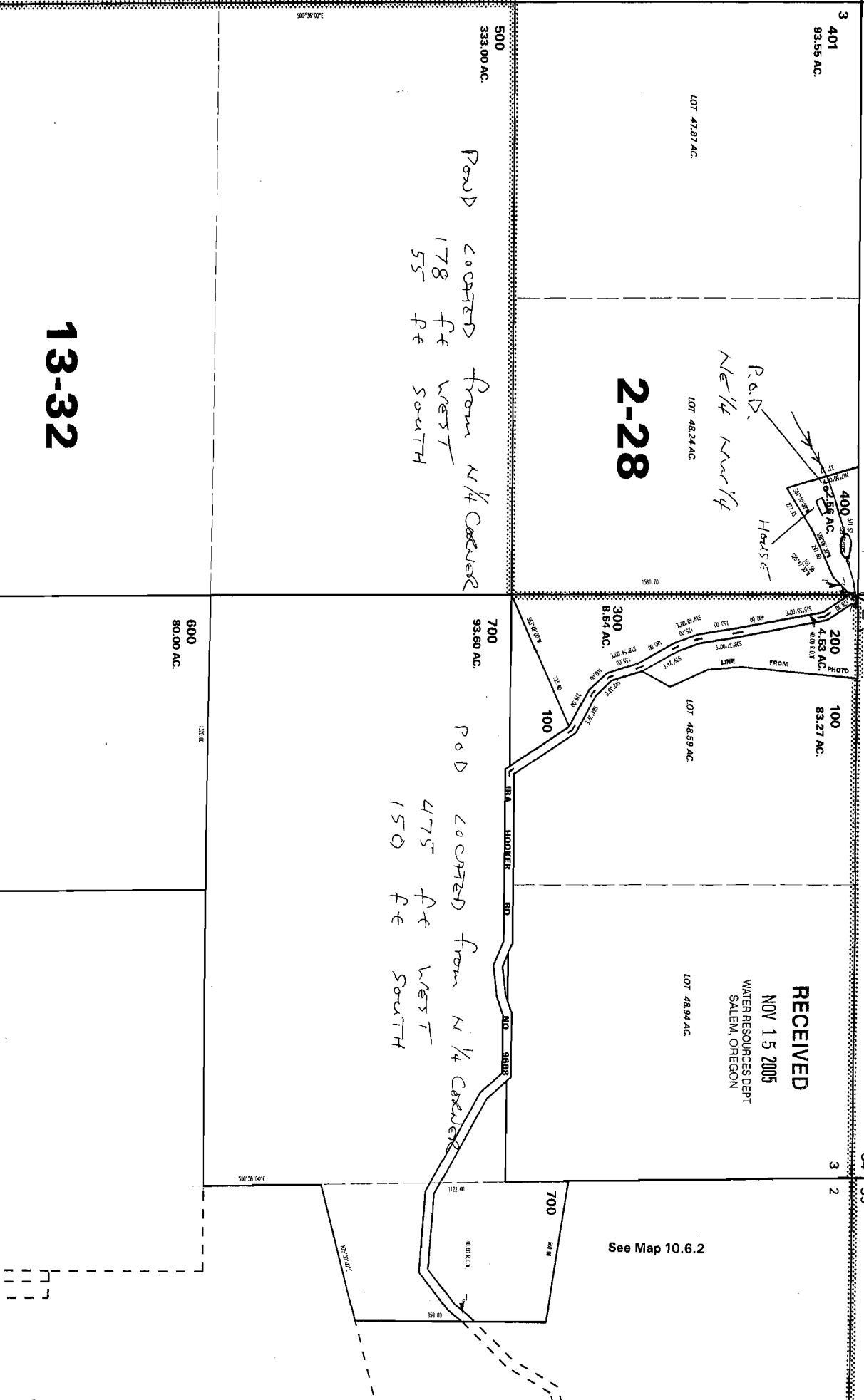
ROAD LOCATED FROM N 1/4 CORNER
475 FE WEST
150 FE SOUTH



RECEIVED
NOV 15 2005
WATER RESOURCES DEPT
SALEM, OREGON

See Map 10.6.4

13-32



SURVEY

FOR

H. D. GORMAN

SECTION 3 T10SR6W W.M. POLK COUNTY, OREGON

RECEIVED

NOV 15 2005

WATER RESOURCES DEPT
SALEM, OREGON

OCT 7, 1967

SR6W
SR6W

IP SET IN FENCE, SECTION LINE
NOT ESTABLISHED
15" FIR N 35° W 11.8'

EAST 671.87

177.8 FT

END 1" 1B V4 CORN 9.98
END 2" 2" FIR N 33° E 4.8

2.6 ACRES

POND

315 FT

STREAM
CISTERN
buried in
ground

House

Shed

337.37

227.76

388.93

N 17° 50' W

241.9

S 29° 10' E

N 1/4 NE 1/4
SW 1/4 SE 1/4

SECTION 3

SCALE 1"=100'

- IRON PIPES SET
- MONUMENTS FOUND

REGISTERED
SURVEYOR

H. D. Gorman

approx 5-86484