

~~SEE T78 ROW 28~~

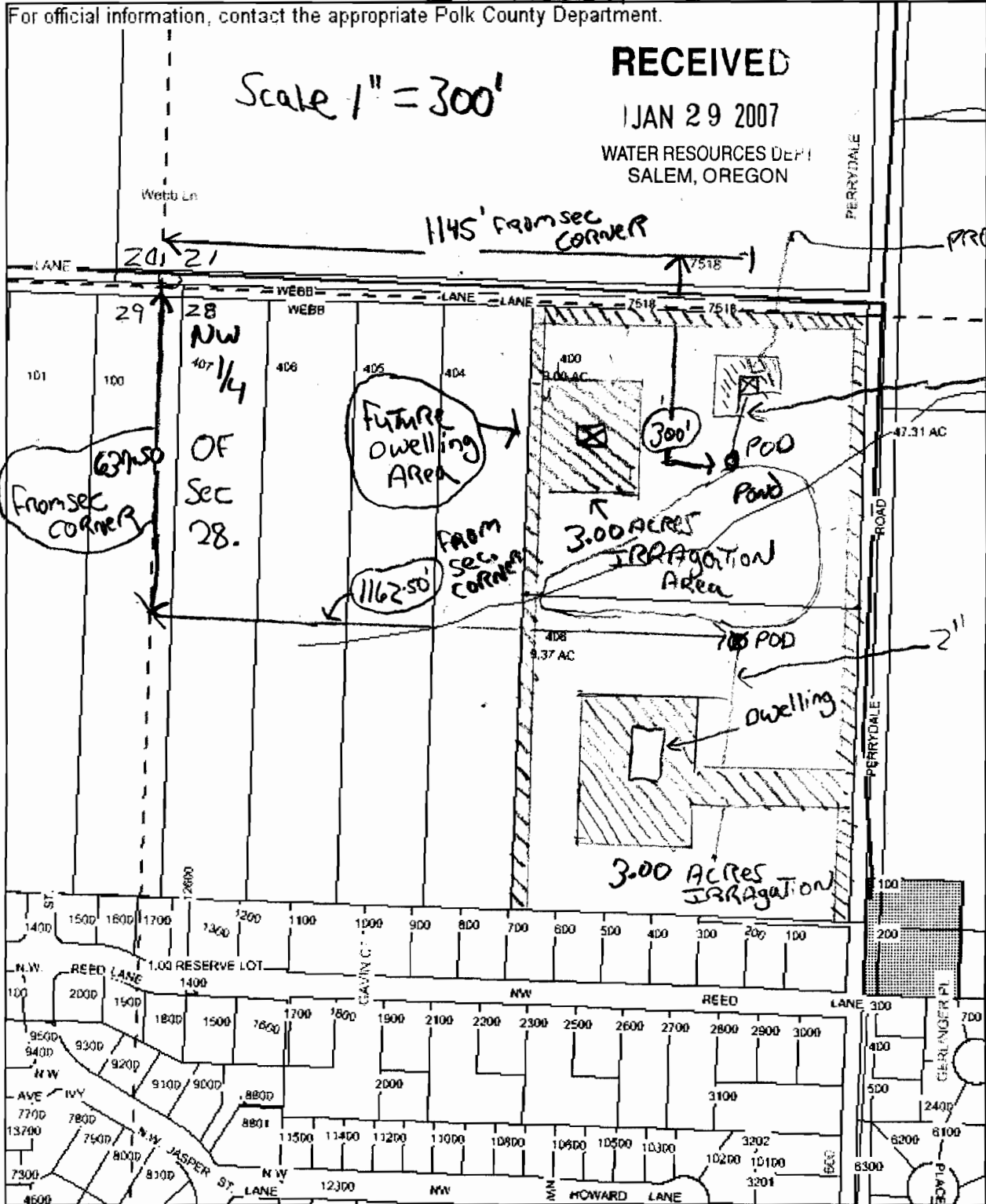
For official information, contact the appropriate Polk County Department.

Scale 1" = 300'

RECEIVED

JAN 29 2007

WATER RESOURCES DEPT
SALEM, OREGON



Z POD LOCATION

TAXLOT # 400 1145' East and 300' south From NW 1/4 of SEC 28 CORNER

A6D LOCATION

TAXLOT # 408 637.5' South and 1162.5' East From NW 1/4 of SEC 28 CORNER