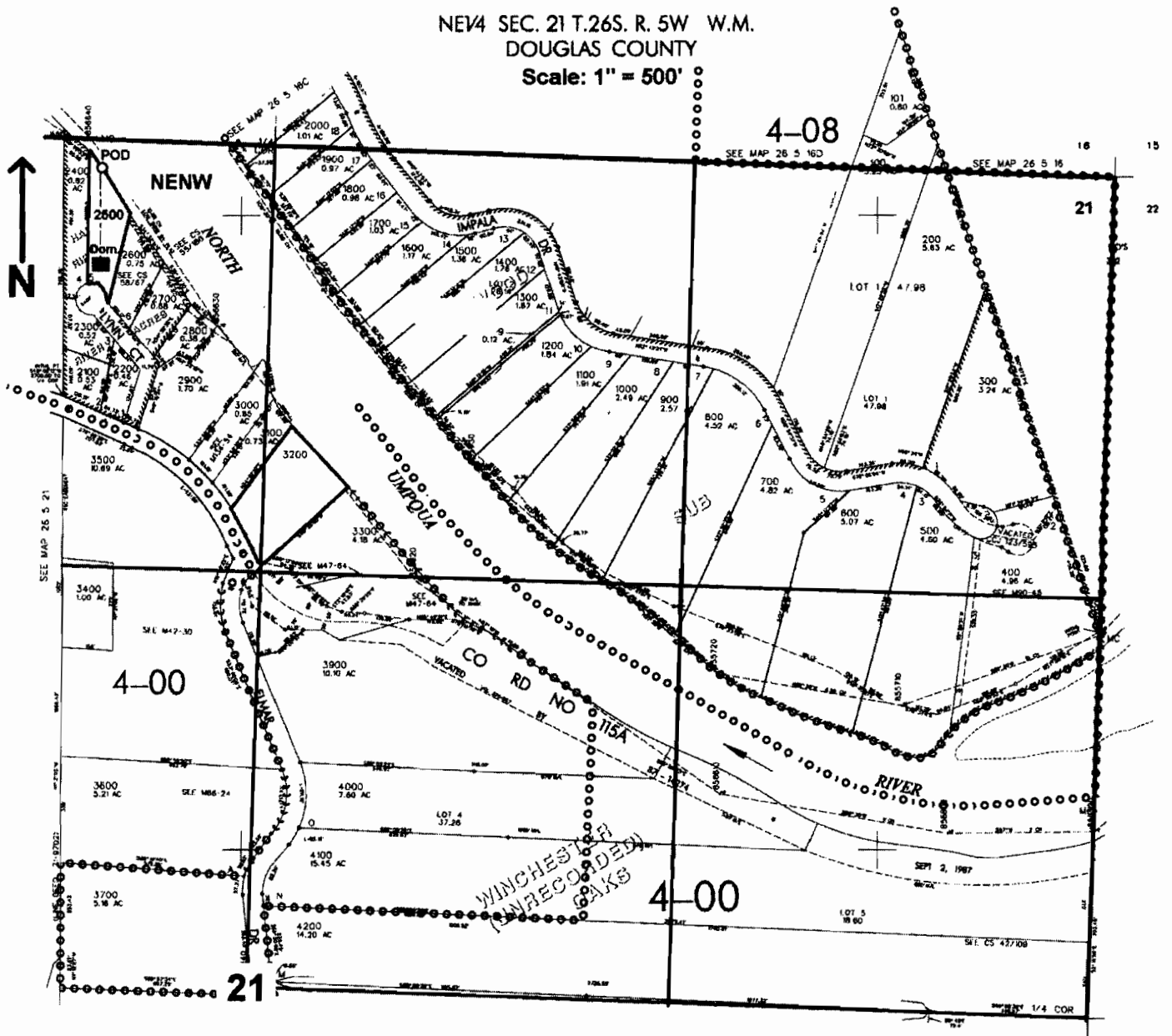


NEV4 SEC. 21 T.26S. R. 5W W.M.  
DOUGLAS COUNTY

Scale: 1" = 500'



'POD is located 85 ft. S. and 540 ft. W. from the N1/4 corner of Sec. 21

RECEIVED  
AUG 21 2006  
WATER RESOURCES DEPT  
SALEM, OREGON

appno 5-86673