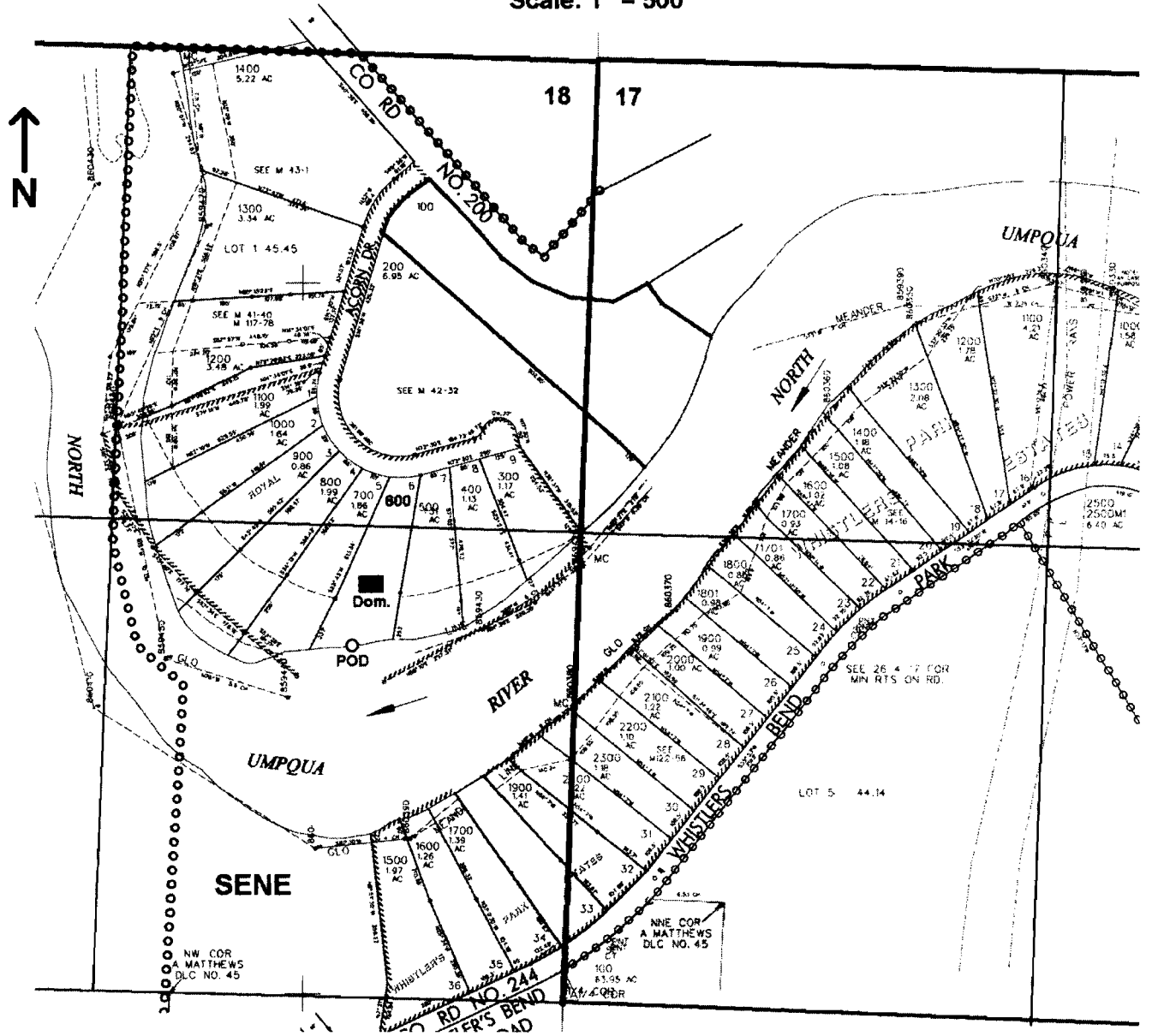


T.26S. R.4 W W.M.
DOUGLAS COUNTY
Scale: 1" = 500'



POD is located 1800 ft. S. and 680 ft. W. from the NE corner of Sec. 18

RECEIVED
 JAN 05 2007
 WATER RESOURCES DEPT.
 SALEM, OREGON

app no 5-86741