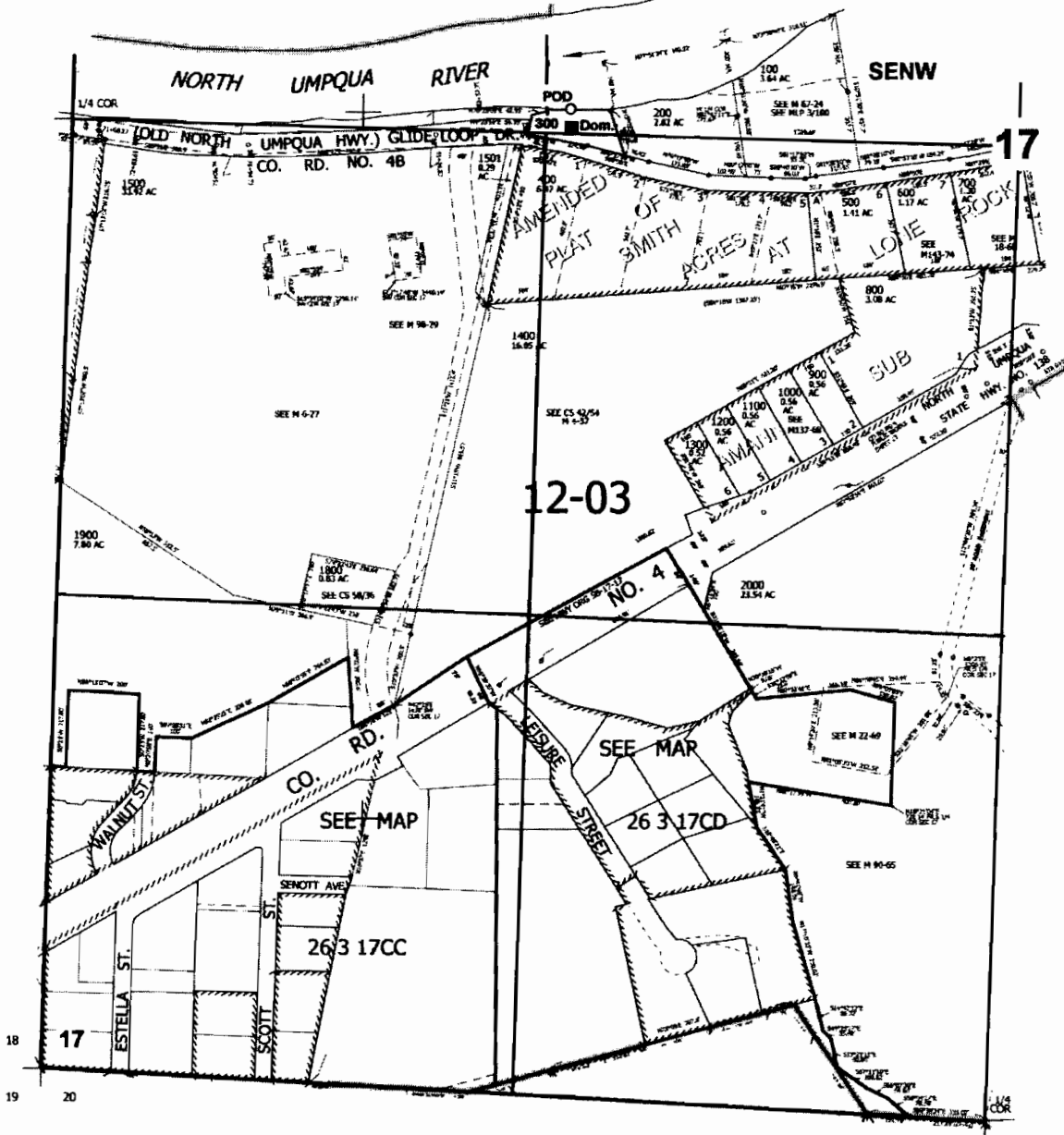


SEC. 17 T. 26S. R. 3W. W.M.
DOUGLAS COUNTY
Scale: 1" = 500'



POD is located 70 ft. N. and 1250 ft. W. from the center of Sec. 17

RECEIVED
APR 05 2006
WATER RESOURCES DEPT
SALEM, OREGON

app no S-86541