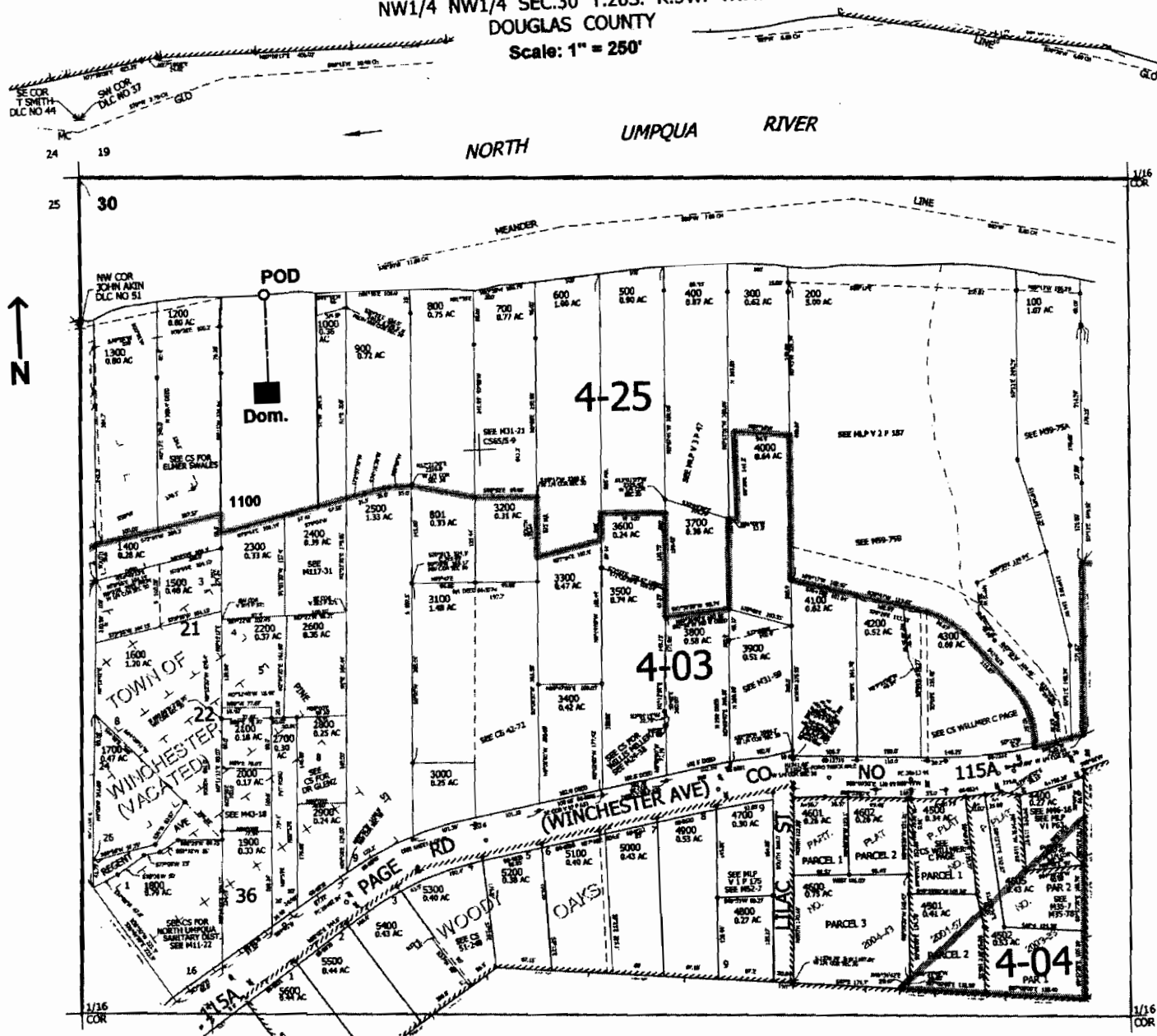


NW1/4 NW1/4 SEC.30 T.26S. R.5W. W.M.  
DOUGLAS COUNTY  
Scale: 1" = 250'



POD is located 190 ft. S. and 290 ft. E. from the NW corner of Sec. 30

**RECEIVED**  
MAY 15 2006  
WATER RESOURCES DEPT  
SALEM, OREGON