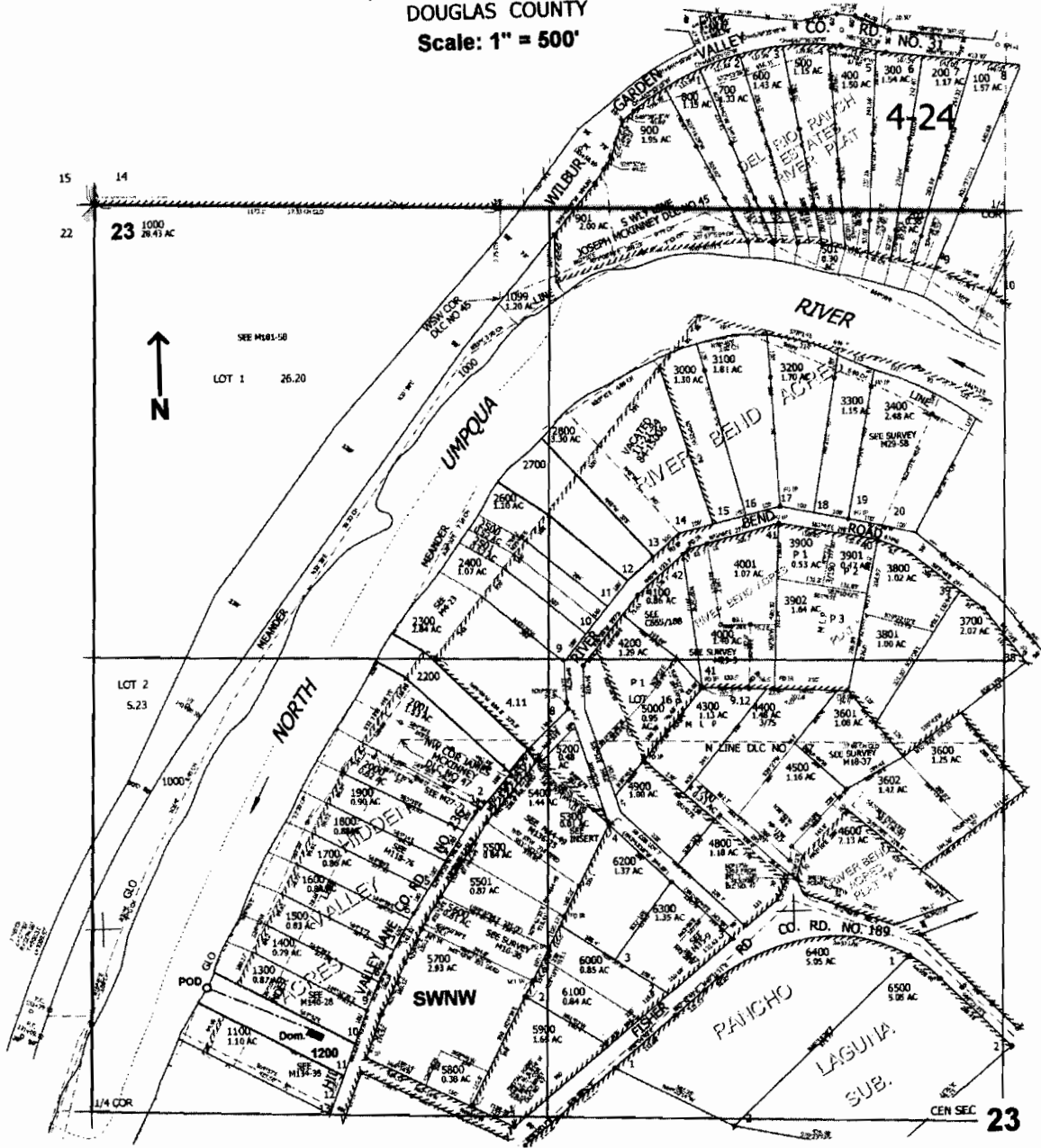


NW1/4 SEC.23 T.26S. R.6W. W.M.  
DOUGLAS COUNTY  
Scale: 1" = 500'



POD is located 360 ft. N. and 330 ft. E. from the W1/4 corner of Sec. 23

**RECEIVED**  
MAY 26 2006  
WATER RESOURCES DEPT  
SALEM, OREGON

1000006 81605