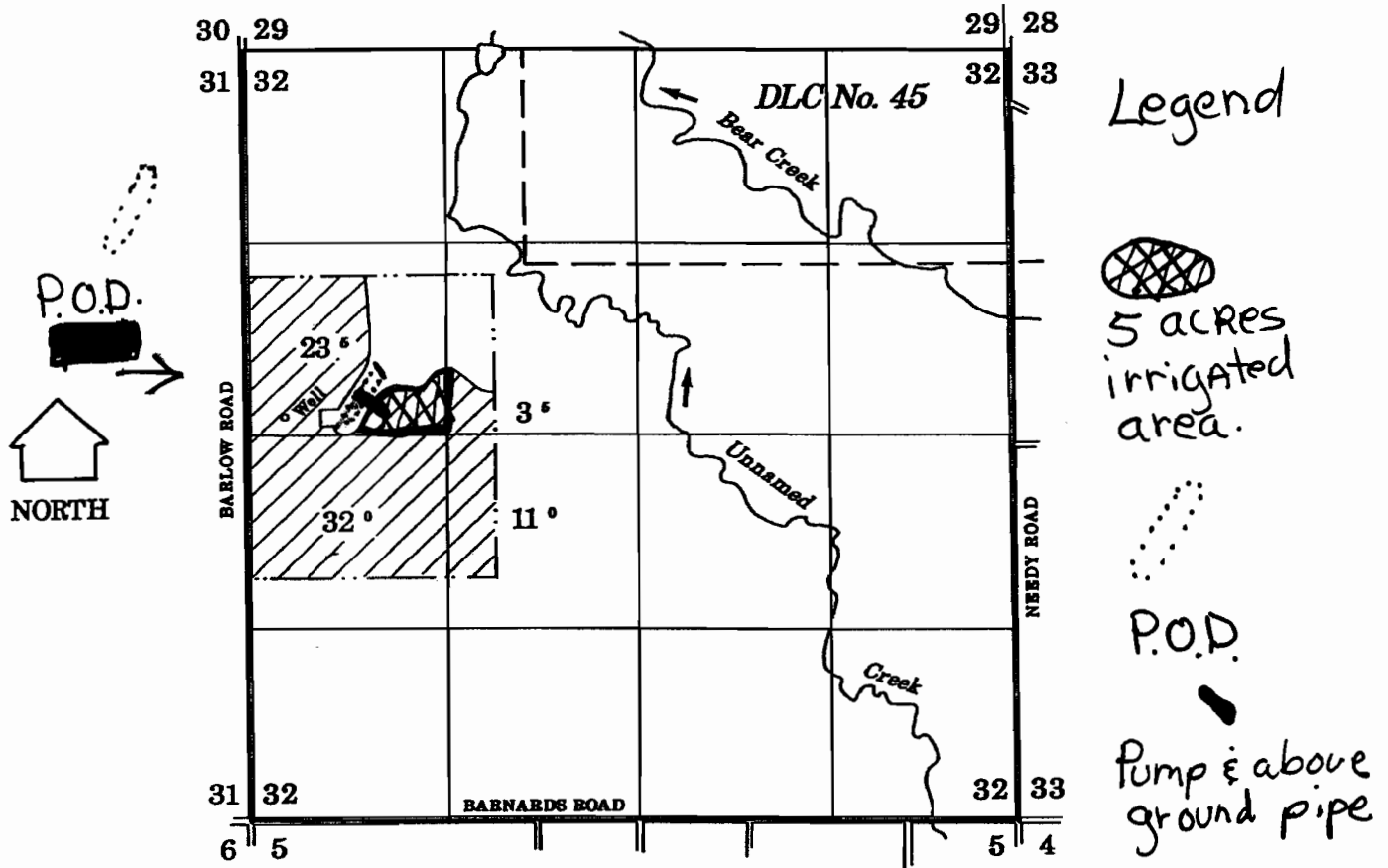


T 4 S, R 1 E, WM

CLACKAMAS COUNTY



Point of Diversion 3200' North
and 550' East of S.W. Corner
of section 32

T. 4S R1E Sec 32

SW 1/4 & NW 1/4

TAX LOT # 00800

RECEIVED

JUN 01 2007

WATER RESOURCES DEPT
SALEM, OREGON

App no 5-86892