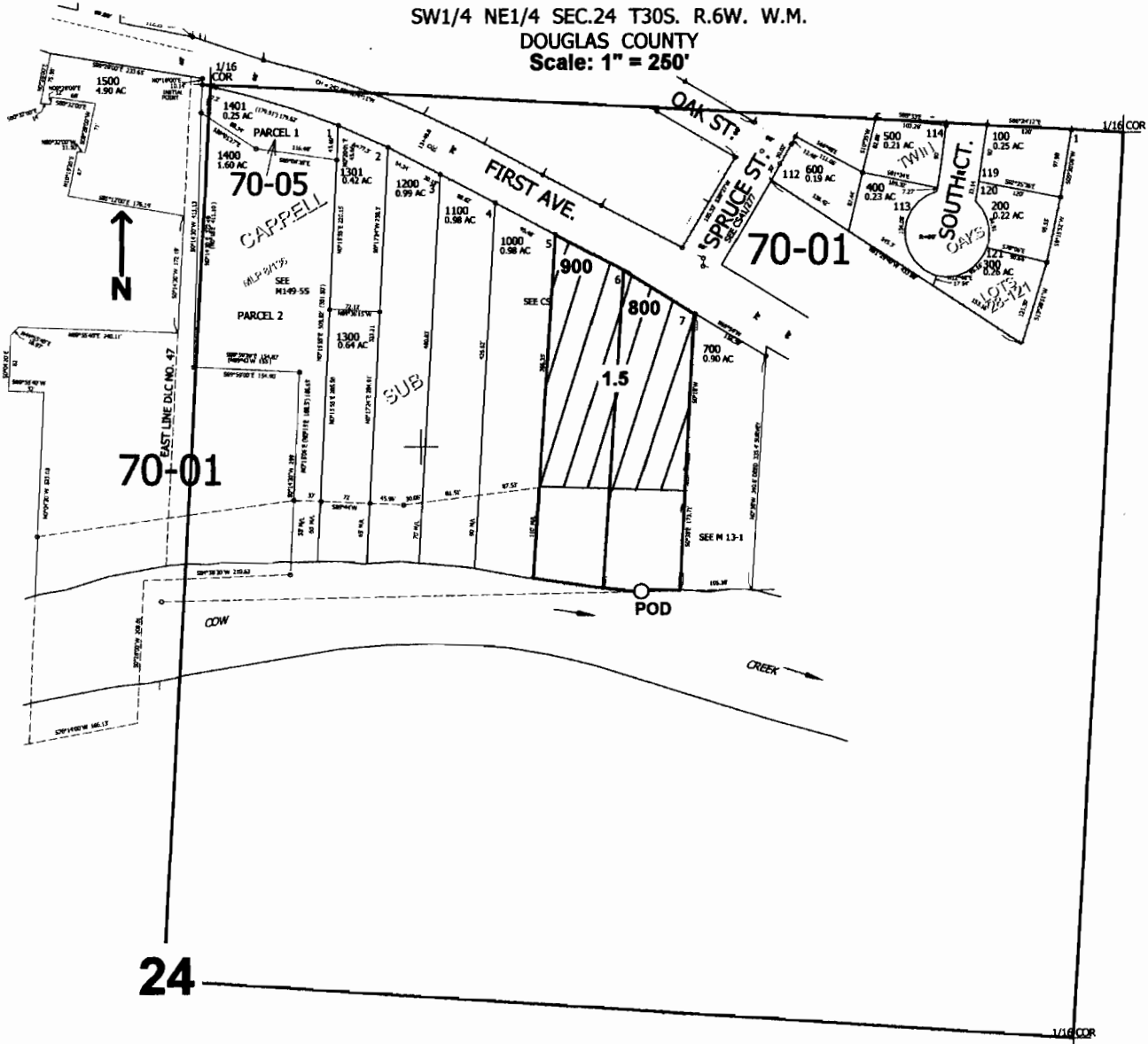


SW1/4 NE1/4 SEC.24 T30S. R.6W. W.M.
DOUGLAS COUNTY
Scale: 1" = 250'



POD is located 600 ft. N. and 675 ft. E. from the center of Sec. 24

RECEIVED

JUN 26 2007

WATER RESOURCES DEPT
SALEM, OREGON

appno 5-86921