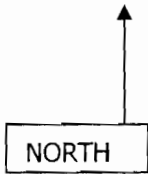


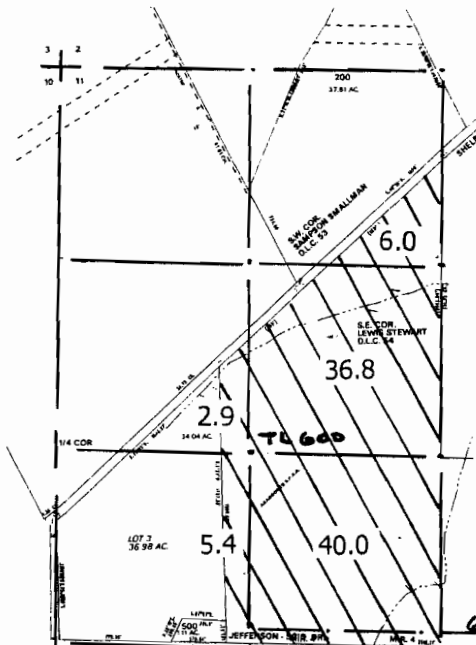
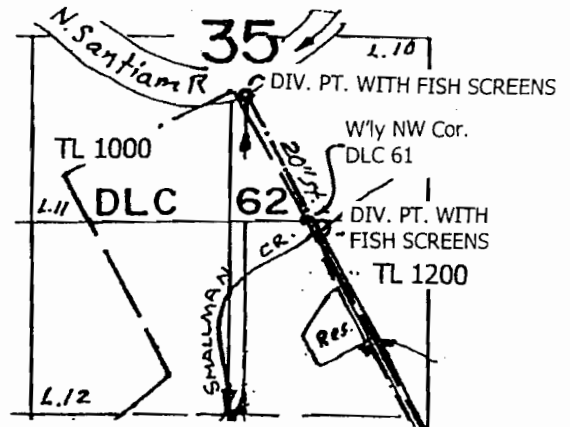
APPLICATION MAP
 MT. JEFFERSON FARMS, INC.
 T 9 & 10 S R 2 W, W.M.
 Scale 4" = 1 mile

RECEIVED

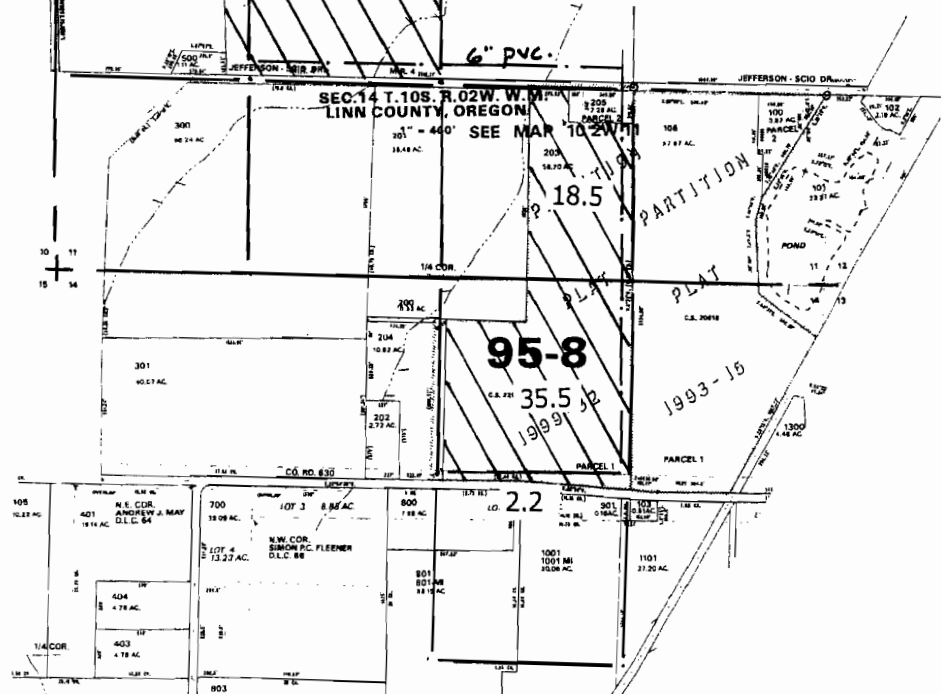
SEP 06 2006
 WATER RESOURCES DEPT
 SALEM, OREGON



T 9 S R 2 W, W.M.



T 10 S R 2 W, W.M.



N. Santiam Rvr. Div. Pt.: 850' N & 400' W from the W'yly NW corner DLC 61

This map is for water right purposes only.

Don Knauer Consulting

appno S-846675