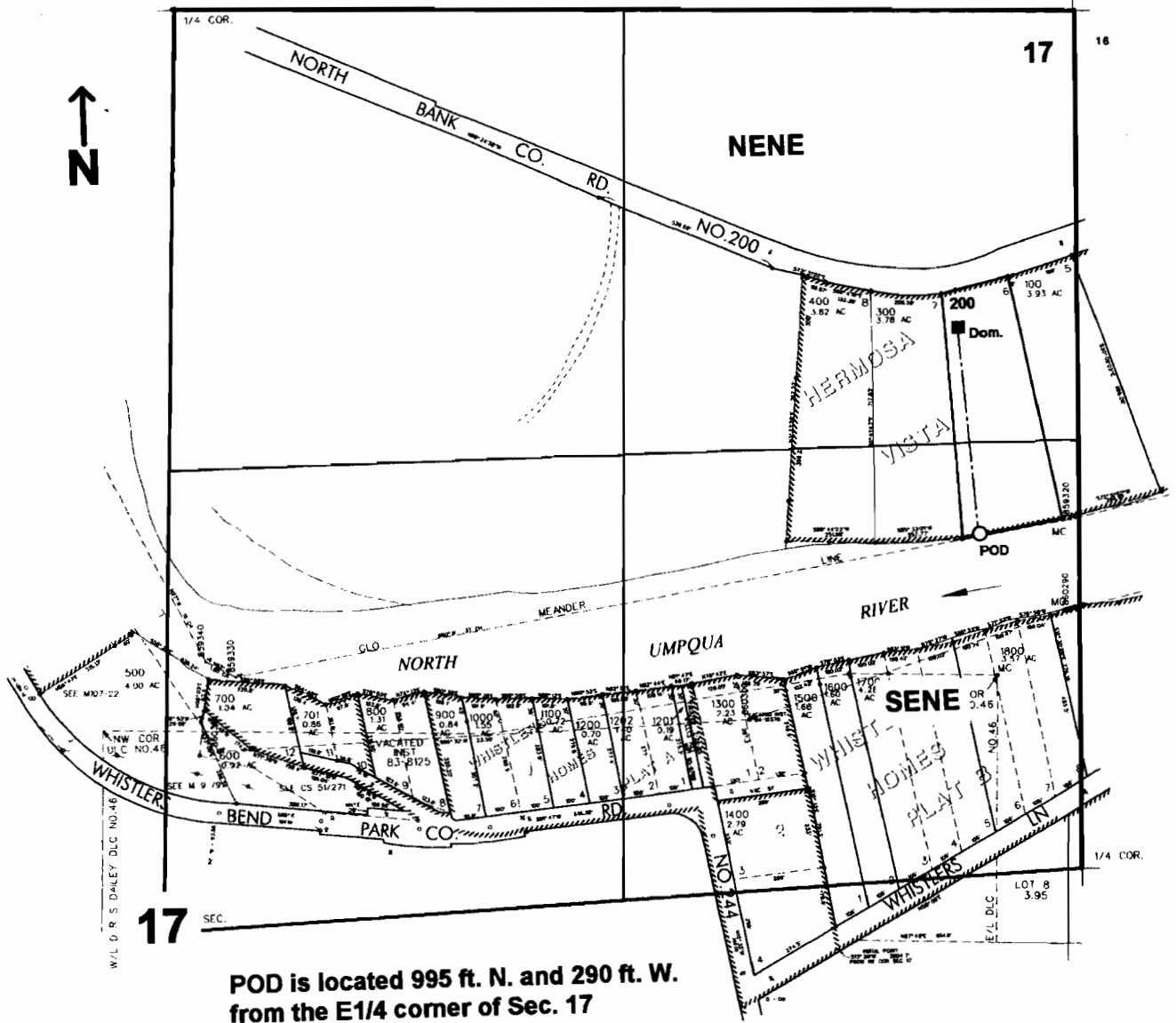


NE1/4 SEC. 17 T.26S. R. 4W. W.M.
DOUGLAS COUNTY
Scale: 1" = 500'



POD is located 995 ft. N. and 290 ft. W.
from the E1/4 corner of Sec. 17

RESOLVED

JUN 25 2007

WATER RESOURCES DEPT
SALEM OREGON

app no 5-86508