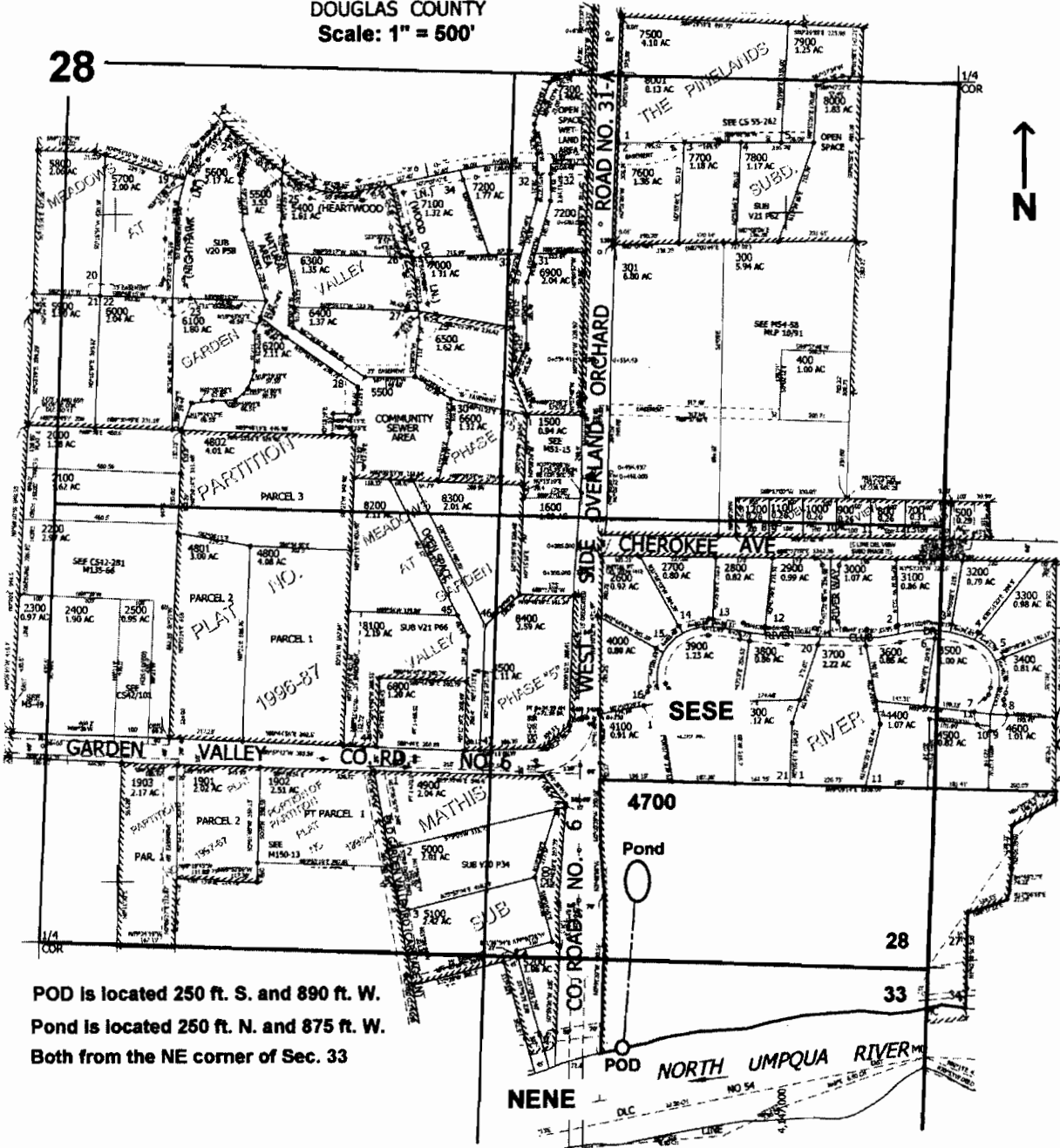


T.26S. R.6W. W.M.  
DOUGLAS COUNTY  
Scale: 1" = 500'

28



POD is located 250 ft. S. and 890 ft. W.  
Pond is located 250 ft. N. and 875 ft. W.  
Both from the NE corner of Sec. 33

RECEIVED

MAY 02 2007

WATER RESOURCES DEPT  
SALEM, OREGON

app no 5-86845