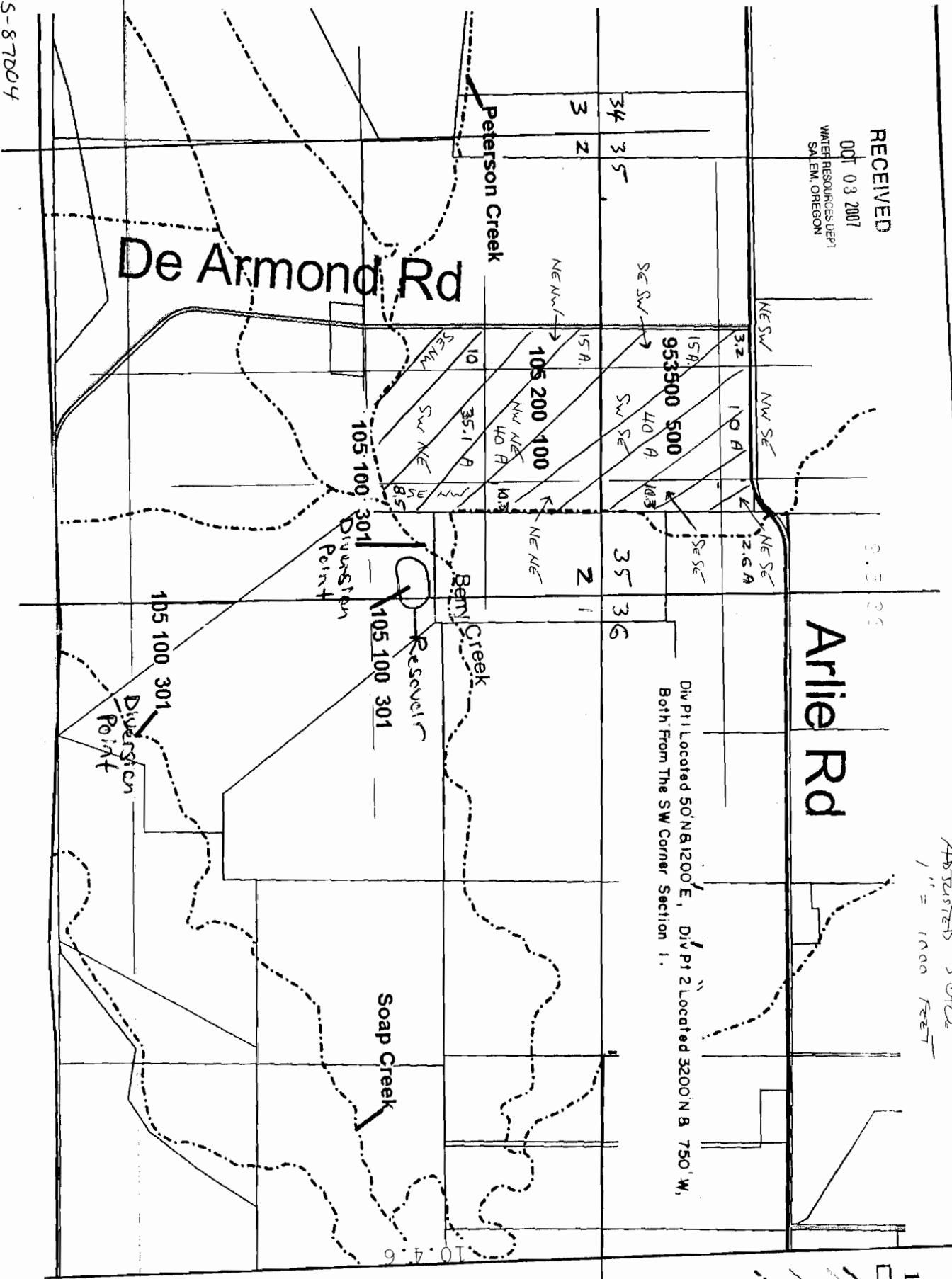


RECEIVED
 OCT 03 2007
 WATER RESOURCES DEPT
 SALEM, OREGON

ADJUSTED SCALE
 1" = 1000 FEET

Polk
 10.5.1

App no 5-87004



De Armond Rd

Arrie Rd

Peterson Creek

Benny Creek

Soap Creek

Reservoir

Diversion Point

Diversion Point

Div Pt 1 Located 50' N & 1200' E, Div Pt 2 Located 3200' N & 750' W,
 Both From The SW Corner Section 1.

105 200 100

105 100 301

105 100 301

105 100 301

953500 500

34 35
 3 Z

35 36
 Z 1

9.5 35

10.4 6