

RECEIVED

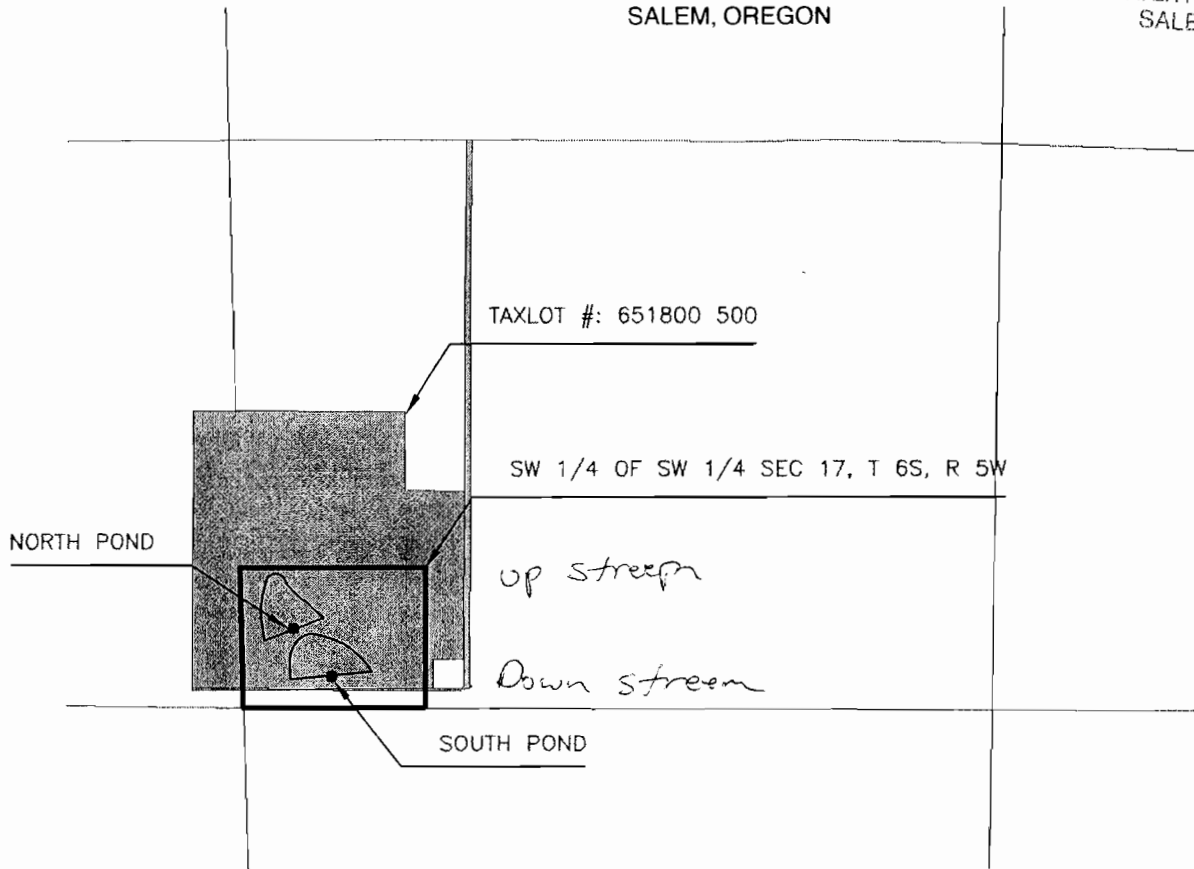
MAR 18 2008

WATER RESOURCES DEPT
SALEM, OREGON

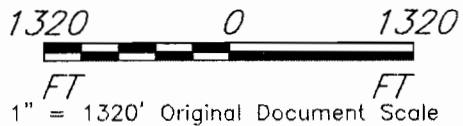
RECEIVED

APR 20 2006

WATER RESOURCES DEPT
SALEM, OREGON



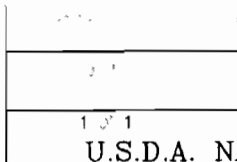
MAXSON - DUCK PONDS



SOUTH POND is 660 ft east and 260 ft north of SW corner of section 17, T 6S, R5W, WM
 NORTH POND is 370 ft east and 590 ft north of SW corner of section 17, T 6S, R5W, WM

CMS
 4/06

4/06



MAXSON
 DUCK PONDS - LOCATION MAP
 POLK COUNTY, OREGON

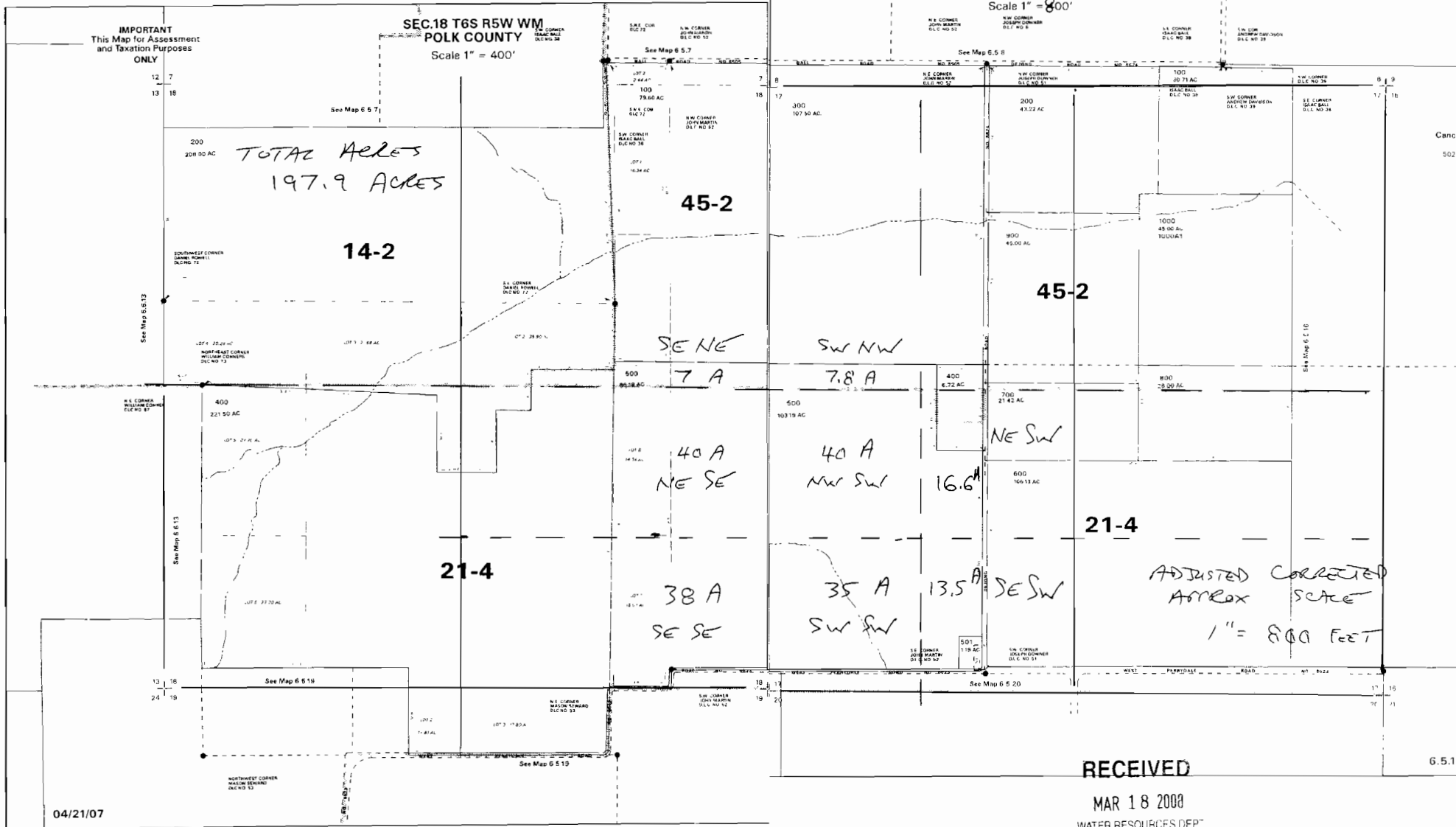
U.S.D.A. NATURAL RESOURCES CONSERVATION SERVICE

app no R-86577 Permit no R-14297 App No S-87129

SEC.17 T6S R5W WM
POLK COUNTY
Scale 1" = 800'

IMPORTANT
This Map for Assessment
and Taxation Purposes
ONLY

SEC.18 T6S R5W WM
POLK COUNTY
Scale 1" = 400'



04/21/07

RECEIVED

MAR 18 2008
WATER RESOURCES DEP.
SALEM, OREGON

App No 5-87129