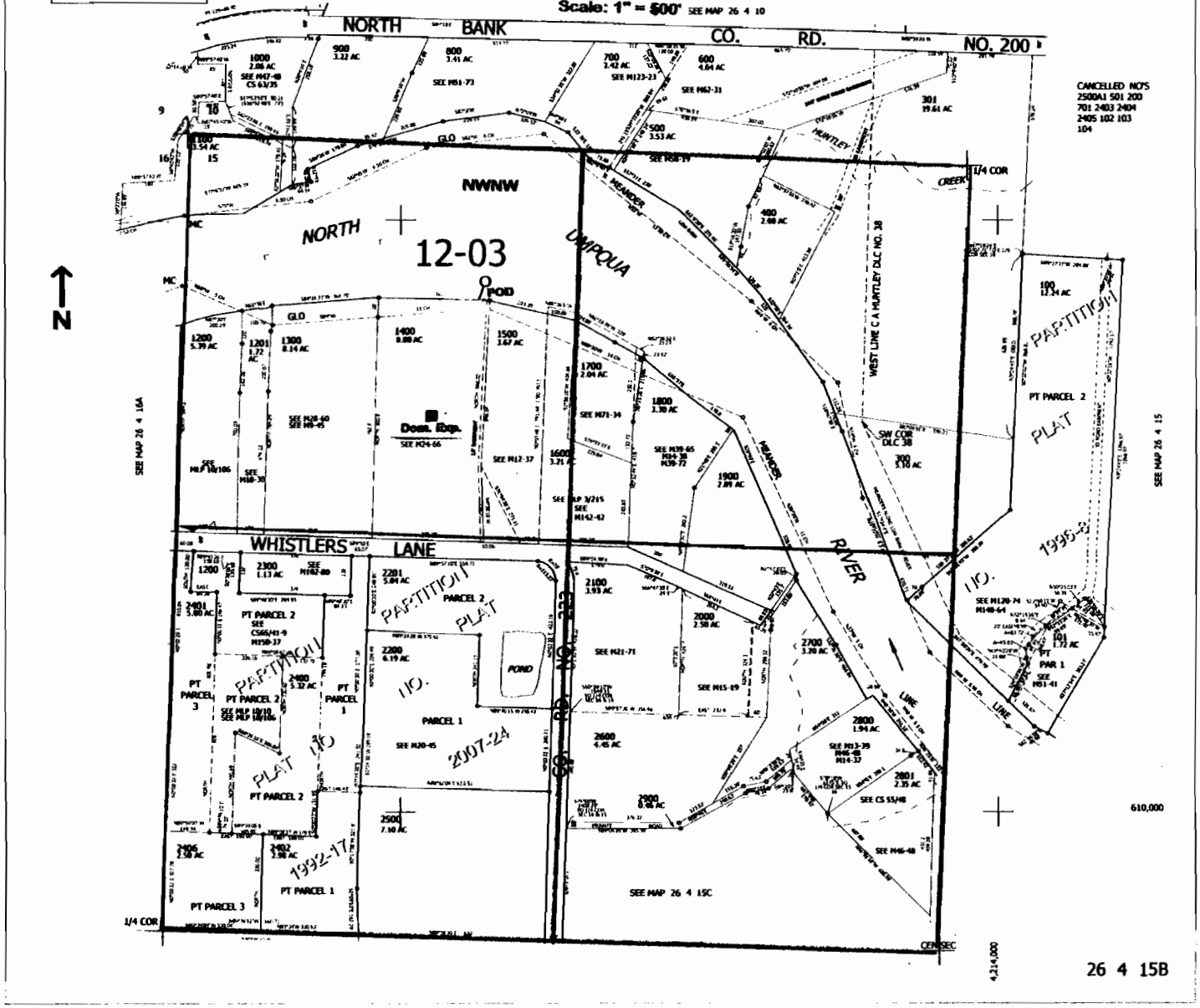


THIS MAP WAS PREPARED FOR ASSESSMENT PURPOSE ONLY.

NW1/4 SEC.15 T.26S. R.4W. W.M.  
DOUGLAS COUNTY  
Scale: 1" = 500' SEE MAP 26 4 10

REVISED ON  
5-29-07

26 4 15B



POD is located 500 ft. S and 1,000 ft. E from the NW corner of Sec. 15

**RECEIVED**

JUN 26 2007

WATER RESOURCES DEPT  
SALEM, OREGON

S-86920