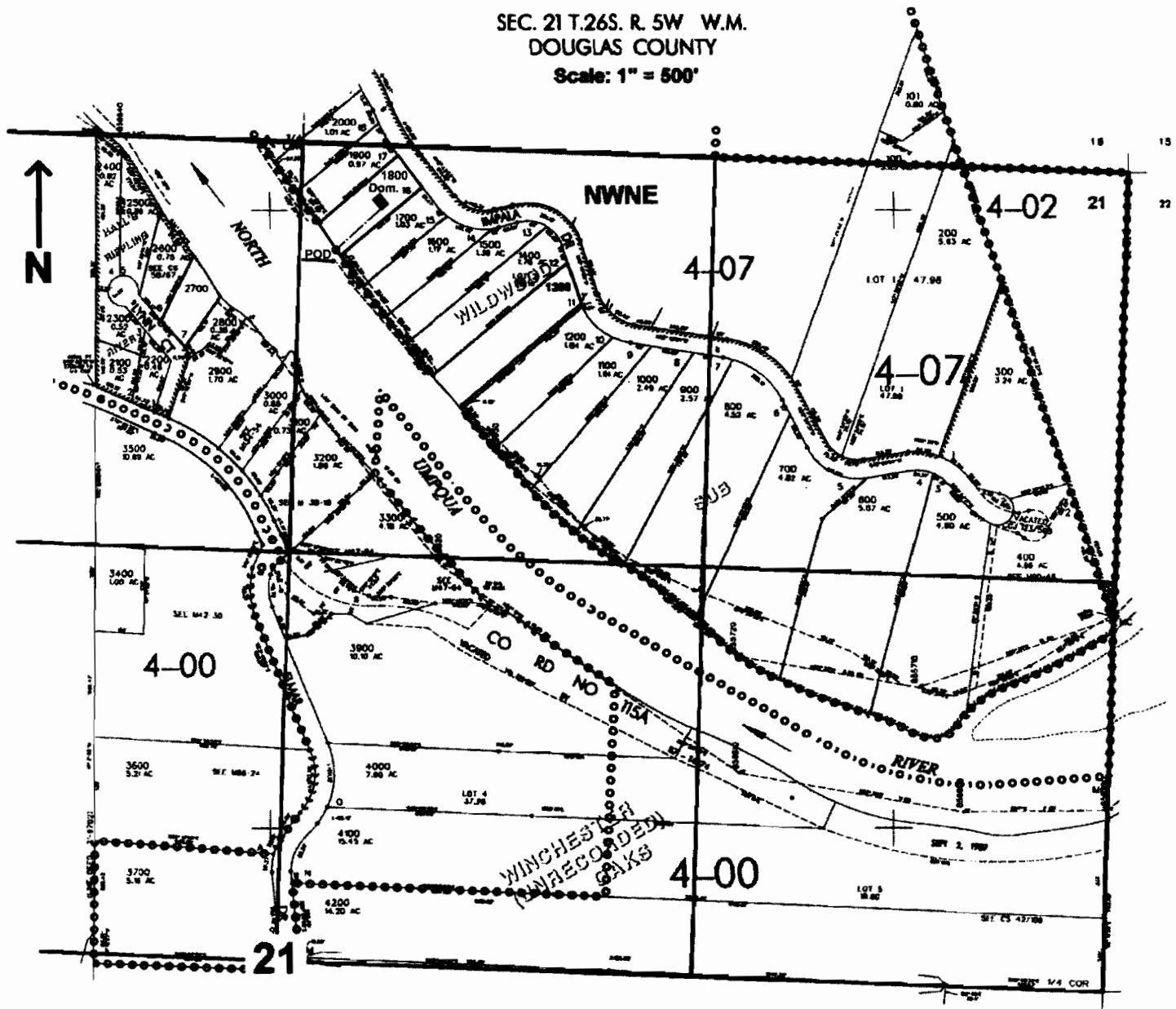


SEC. 21 T.26S. R. 5W W.M.  
DOUGLAS COUNTY  
Scale: 1" = 500'



POD is located 340 ft. S. and 120 ft. E. from the N1/4 corner of Sec. 21

**RECEIVED**

SFP 21 2007

WATER RESOURCES DEPT  
SALEM, OREGON

App no S-86986