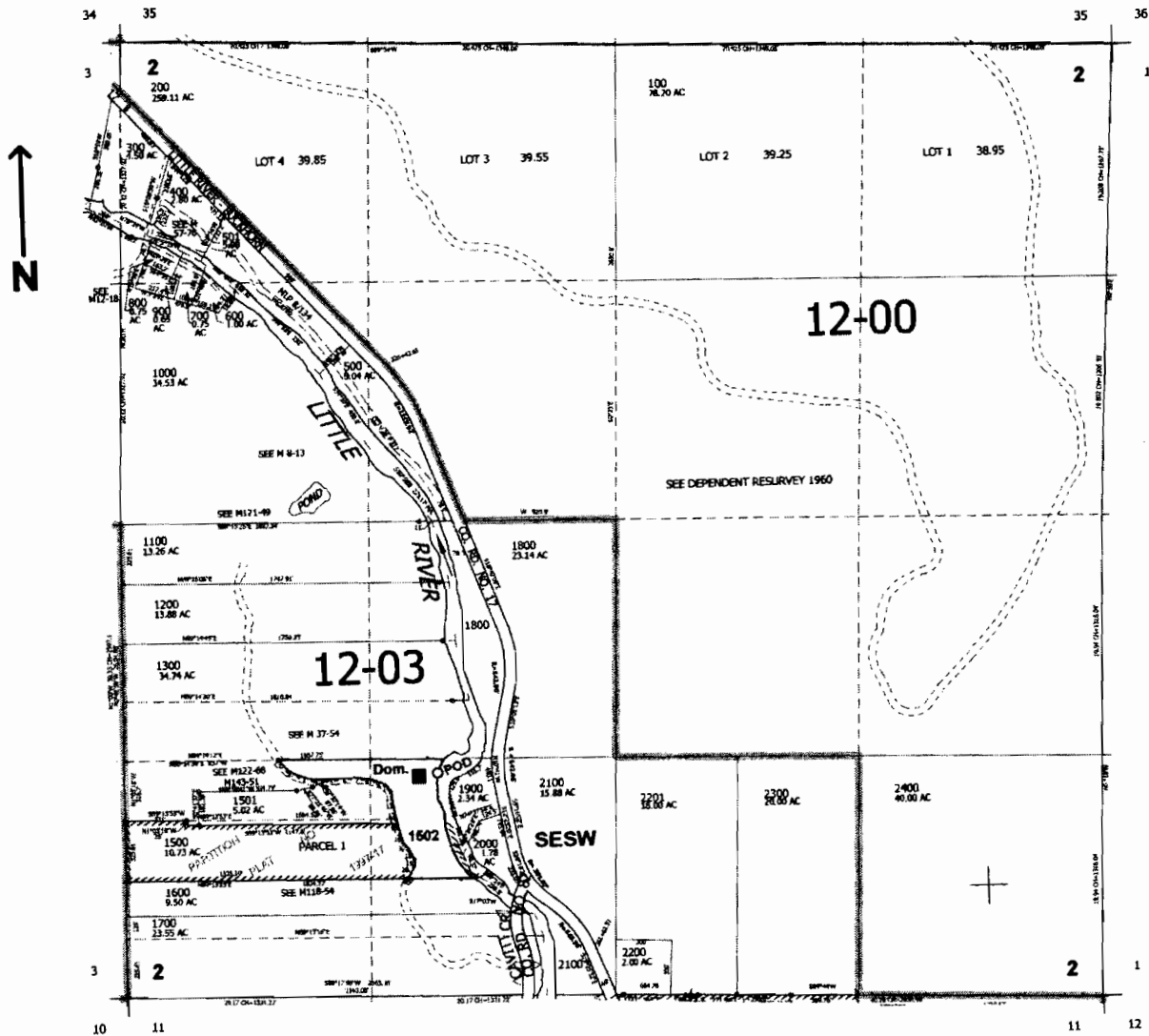


S86771

SEC.2 T.27S. R.3W. W.M.
DOUGLAS COUNTY

Scale: 1" = 1000'



POD is located 1210 ft. N. and 975 ft. W. from the S1/4 corner of Sec. 2

RECEIVED

FEB 14 2007

WATER RESOURCES DEPT
SALEM, OREGON