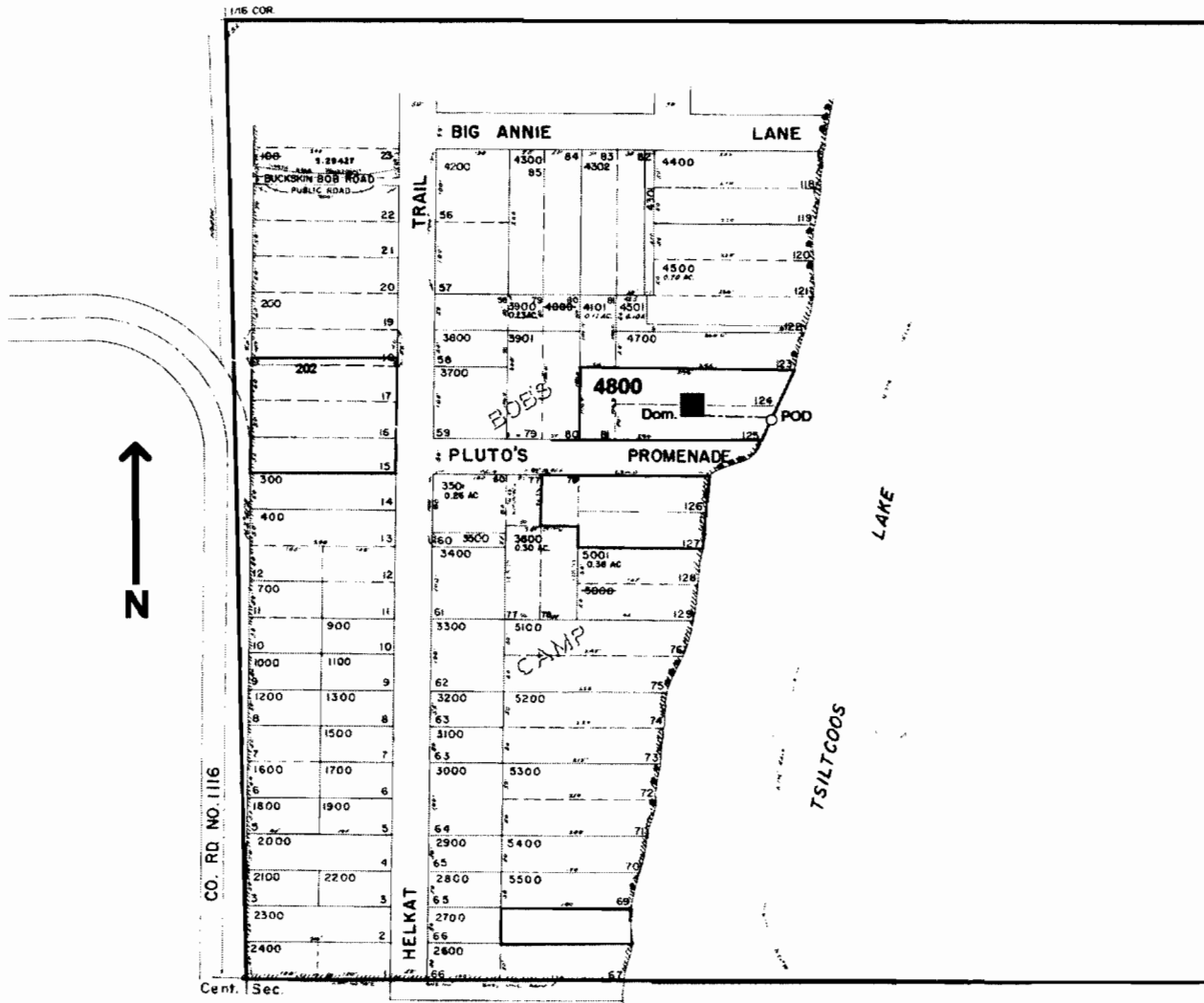


SW1/4 NE1/4 Sec. 26 T19S. R.12W. WM

LANE COUNTY

Scale: 1" = 250'



POD is located 765 ft. N. and 730 ft. E. from the center of Sec. 26

RECEIVED

APR 27 2007

WATER RESOURCES DEPT
SALEM, OREGON

5-86840