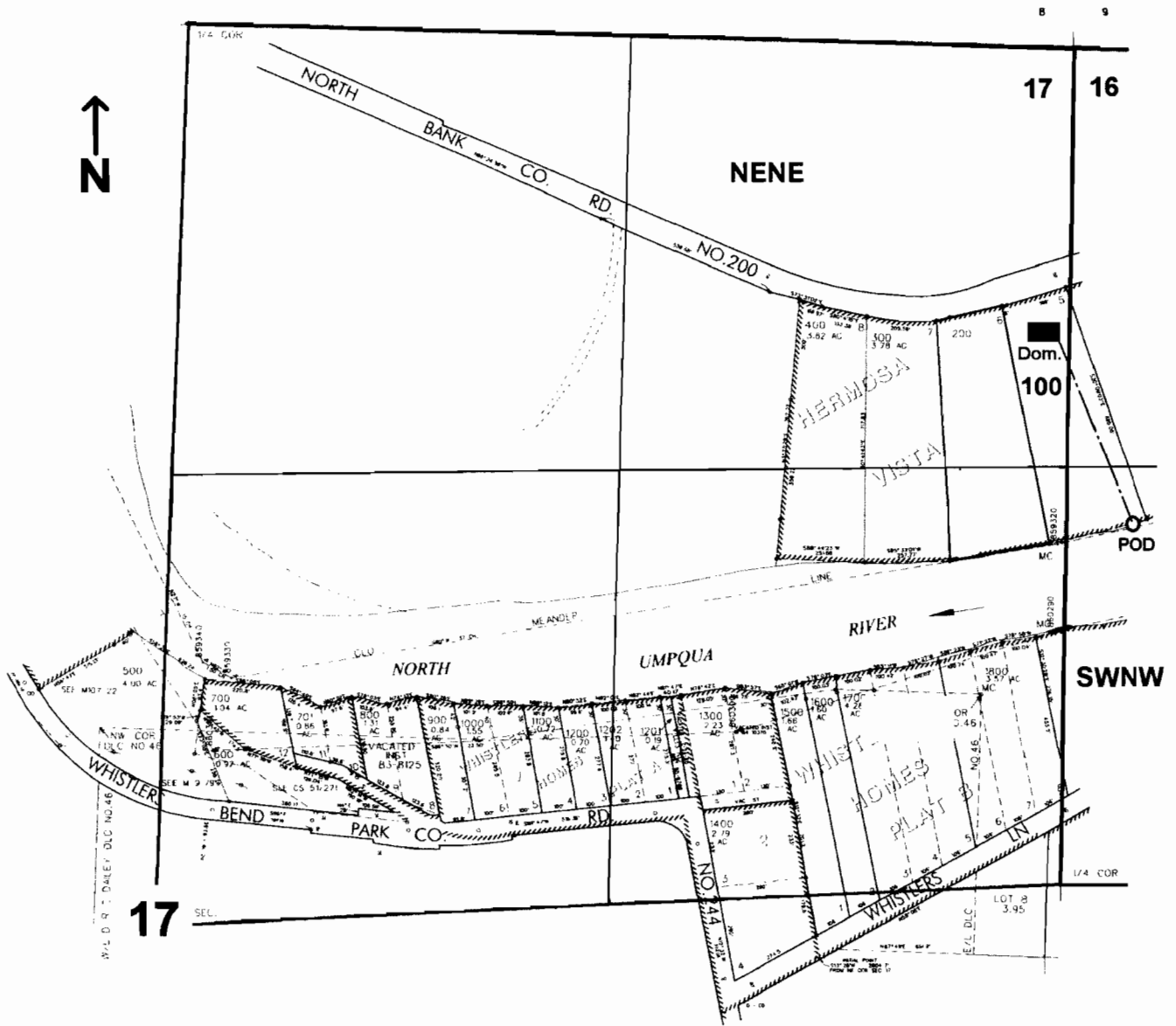


T.26S. R. 4W. W.M.
DOUGLAS COUNTY
Scale: 1" = 500'



POD is located 1080 ft. N. and 200 ft. E. from the E1/4 corner of Sec. 17

RECEIVED

OCT 22 2007

WATER RESOURCES DEPT
SALEM, OREGON

Appno 5- 86999