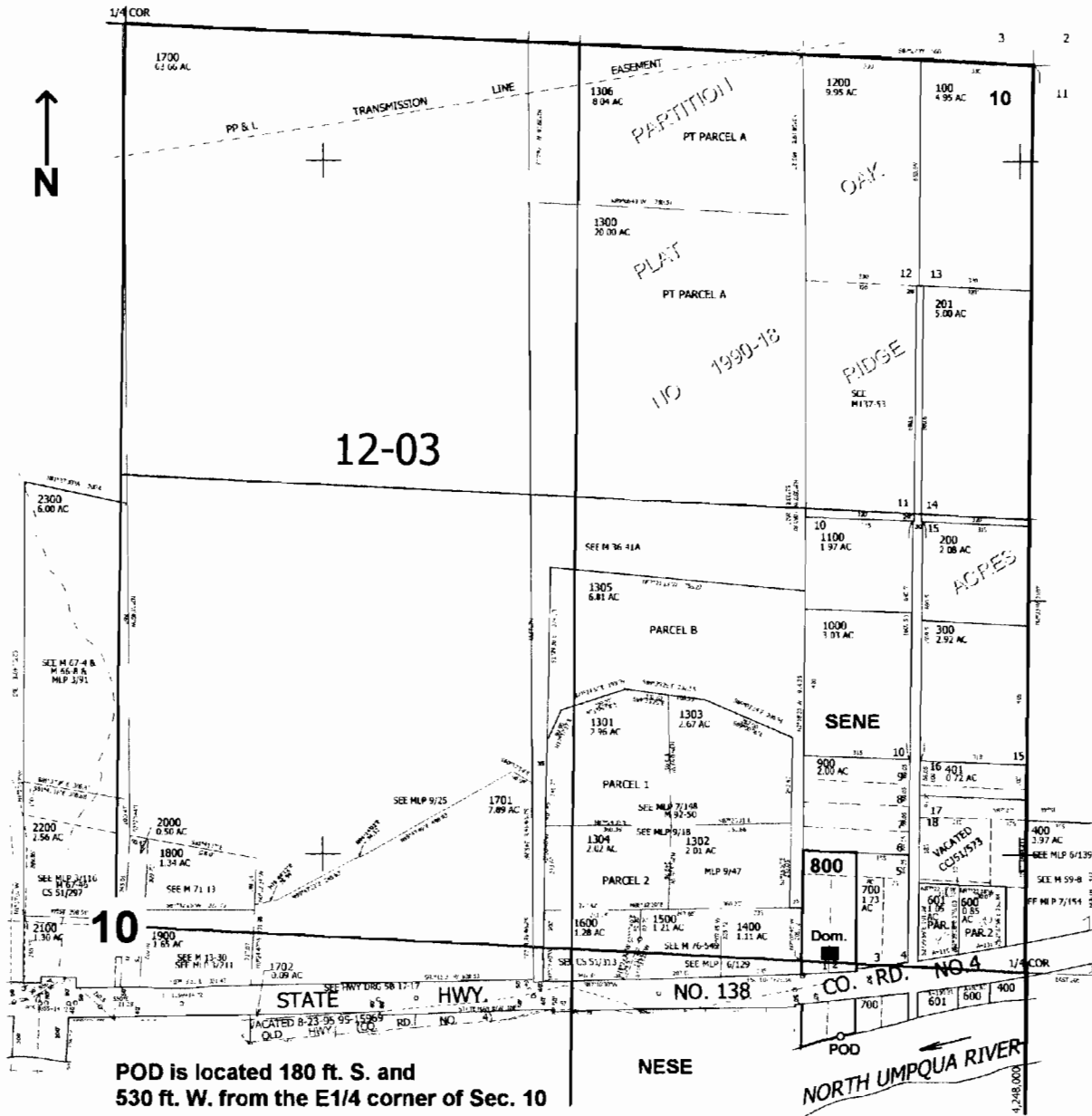


SEC.10 T.26S. R.3W. W.M.
DOUGLAS COUNTY

Scale: 1" = 500'



POD is located 180 ft. S. and
530 ft. W. from the E1/4 corner of Sec. 10

NESE

RECEIVED

NOV 13 2007

WATER RESOURCES DEPT
SALEM OREGON

apno 5-87037