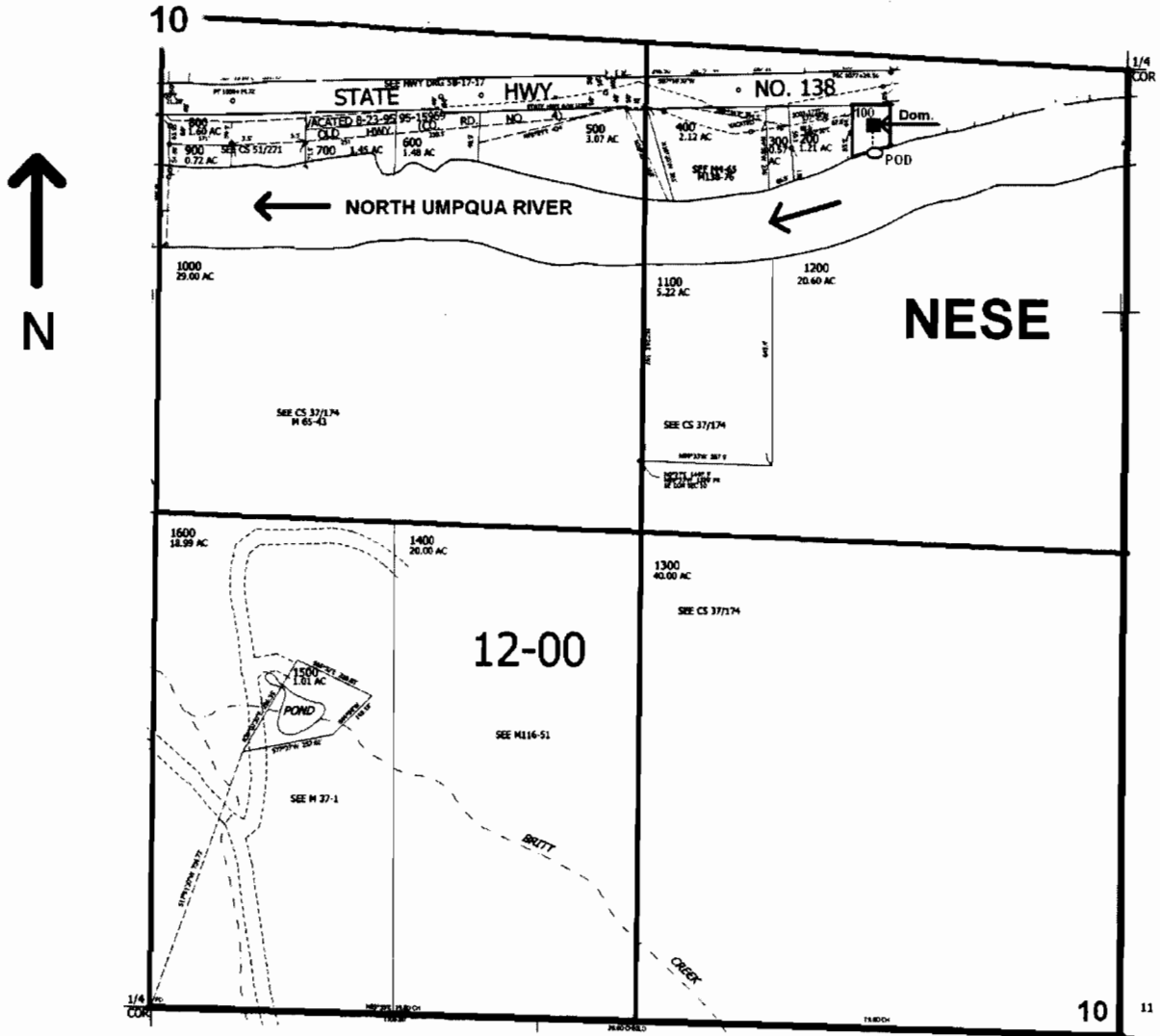


SE1/4 SEC.10 T.26S. R.3W. W.M.
DOUGLAS COUNTY
Scale: 1" = 500 ft.



POD located 250 ft. S. and 675 ft W from the E1/4 Corner of Sec. 10.

RECEIVED

MAR 30 2008

WATER RESOURCES DEPT
SALEM, OREGON

S 87113