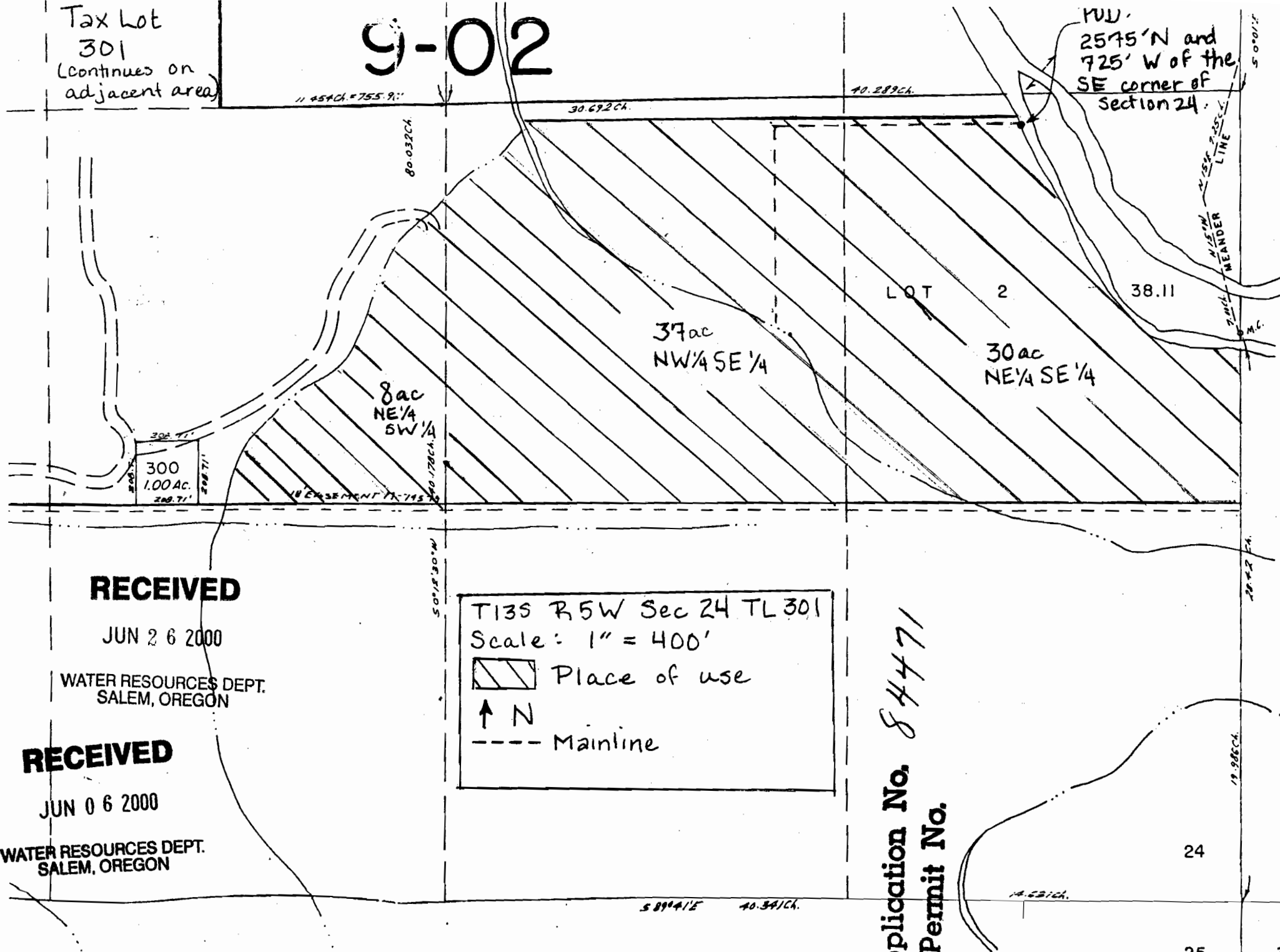


Tax Lot  
301  
(Continues on  
adjacent area)

# 9-02

MUJ.  
2575' N and  
725' W of the  
SE corner of  
Section 24.



**RECEIVED**



JUN 26 2000

WATER RESOURCES DEPT.  
SALEM, OREGON

**RECEIVED**

JUN 06 2000

WATER RESOURCES DEPT.  
SALEM, OREGON

T135 R5W Sec 24 TL 301  
 Scale: 1" = 400'  
 Place of use  
 N  
 --- Mainline

Application No. 84471  
Permit No.

SEE MAP 13 5 25

24

25