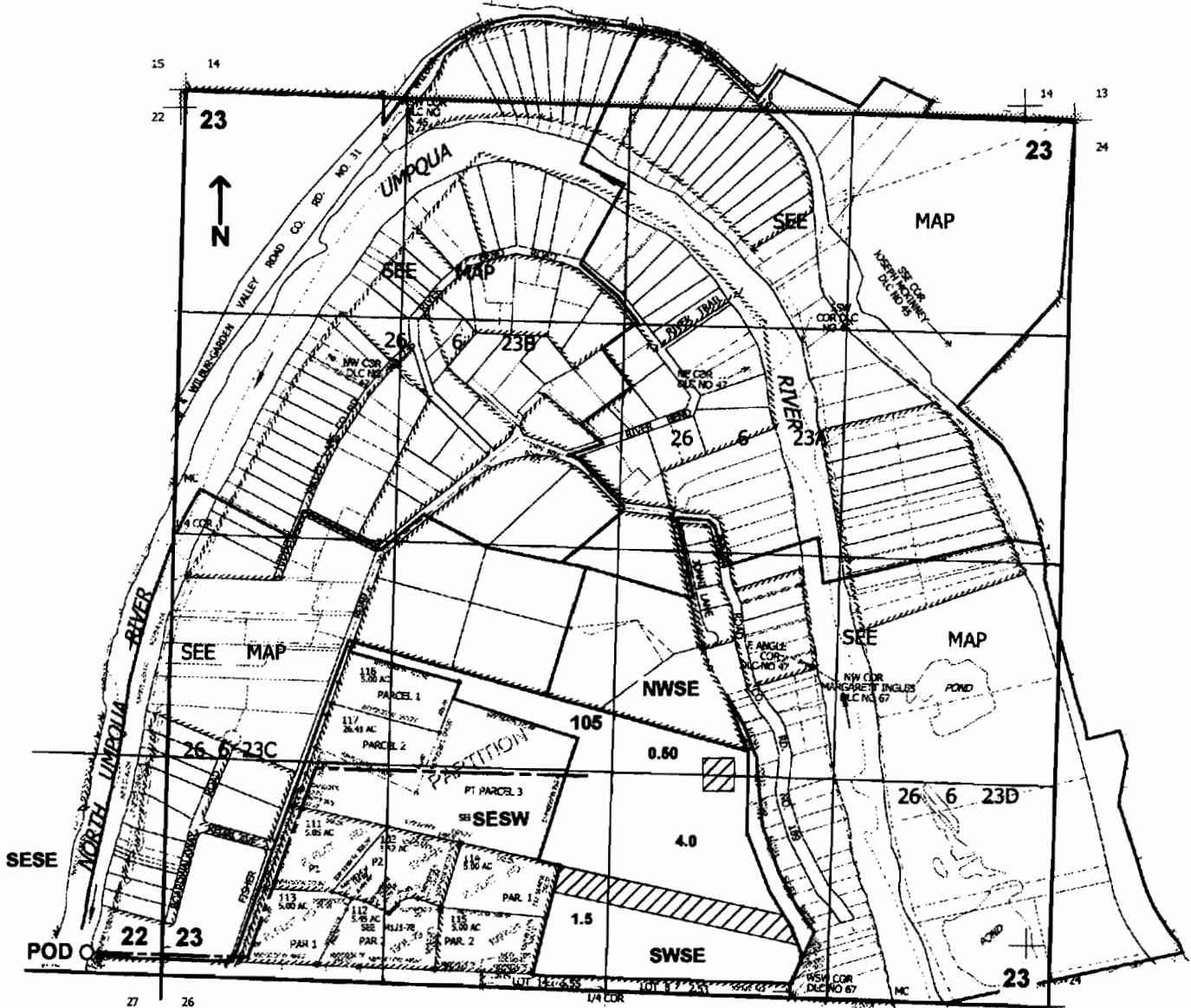


SEC.23 T.26S. R.6W. W.M.
DOUGLAS COUNTY
Scale: 1" = 1000'



POD is located 120 ft. N. and 450 ft. W. from the SW corner of Sec. 23

app # S86298

RECEIVED

MAY 06 2005

WATER RESOURCES DEPT
SALEM, OREGON