




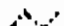

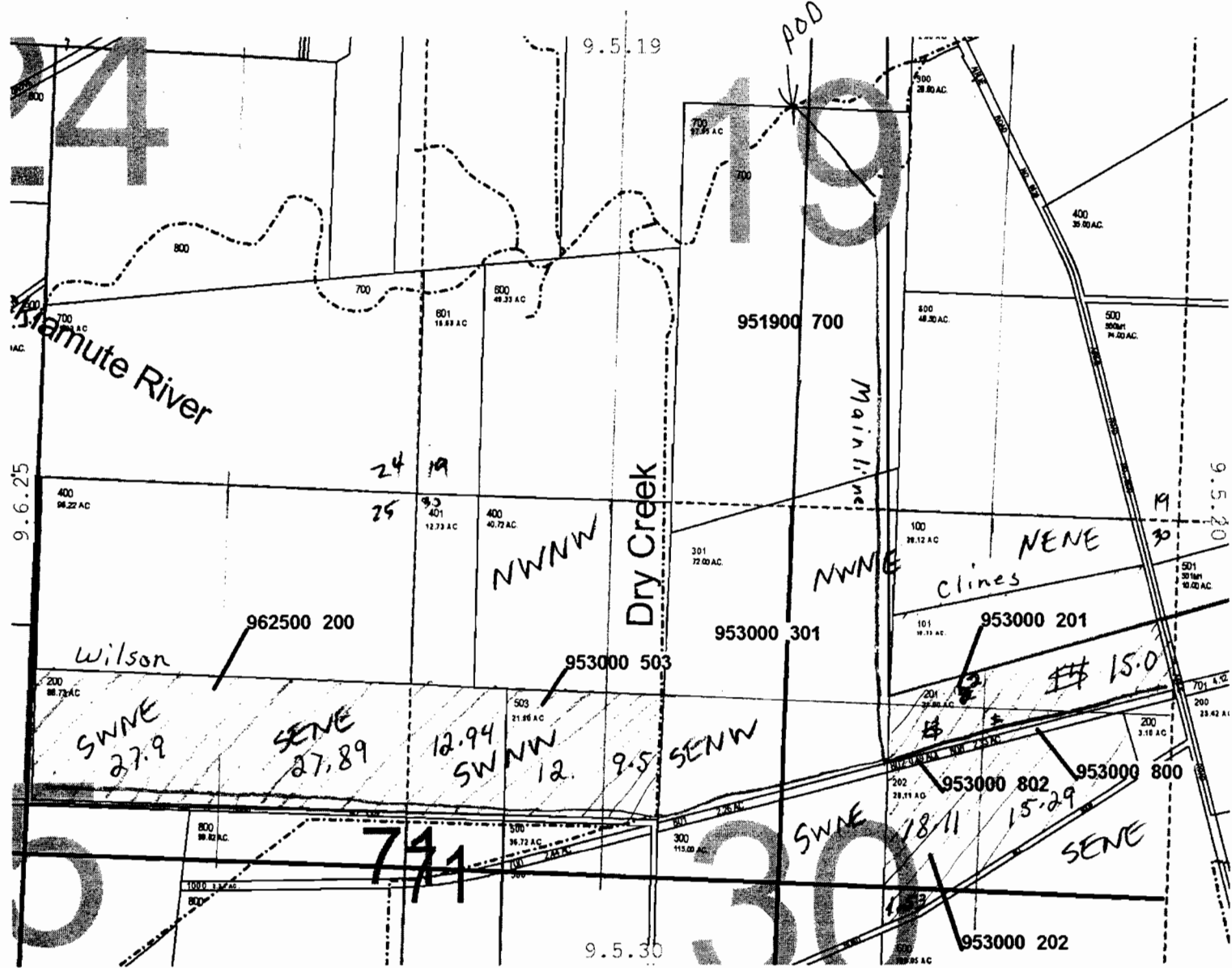


Polk County Map

9.5.30

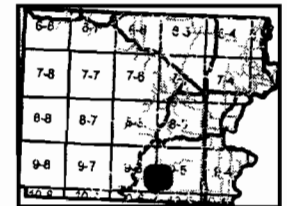
-  DLC
-  Section
-  Taxlot#07
-  Taxlot Arrows07
-  Taxlot Boundary3
-  taxlot07
-  Water



POD is 2500 feet Nth and 2300 feet east of the SW Section 19
 POD is same as Montez cert # 42264

This map was produced using the Polk County GIS data. The GIS data is maintained by the county to support its governmental activities. The county is not responsible for map errors, omissions, misuse or misinterpretation.

RECEIVED
 APR 29 2007
 WATER RESOURCES DEPT
 SALEM, OREGON



 8/23/2007 








1 in. = 1000 ft.

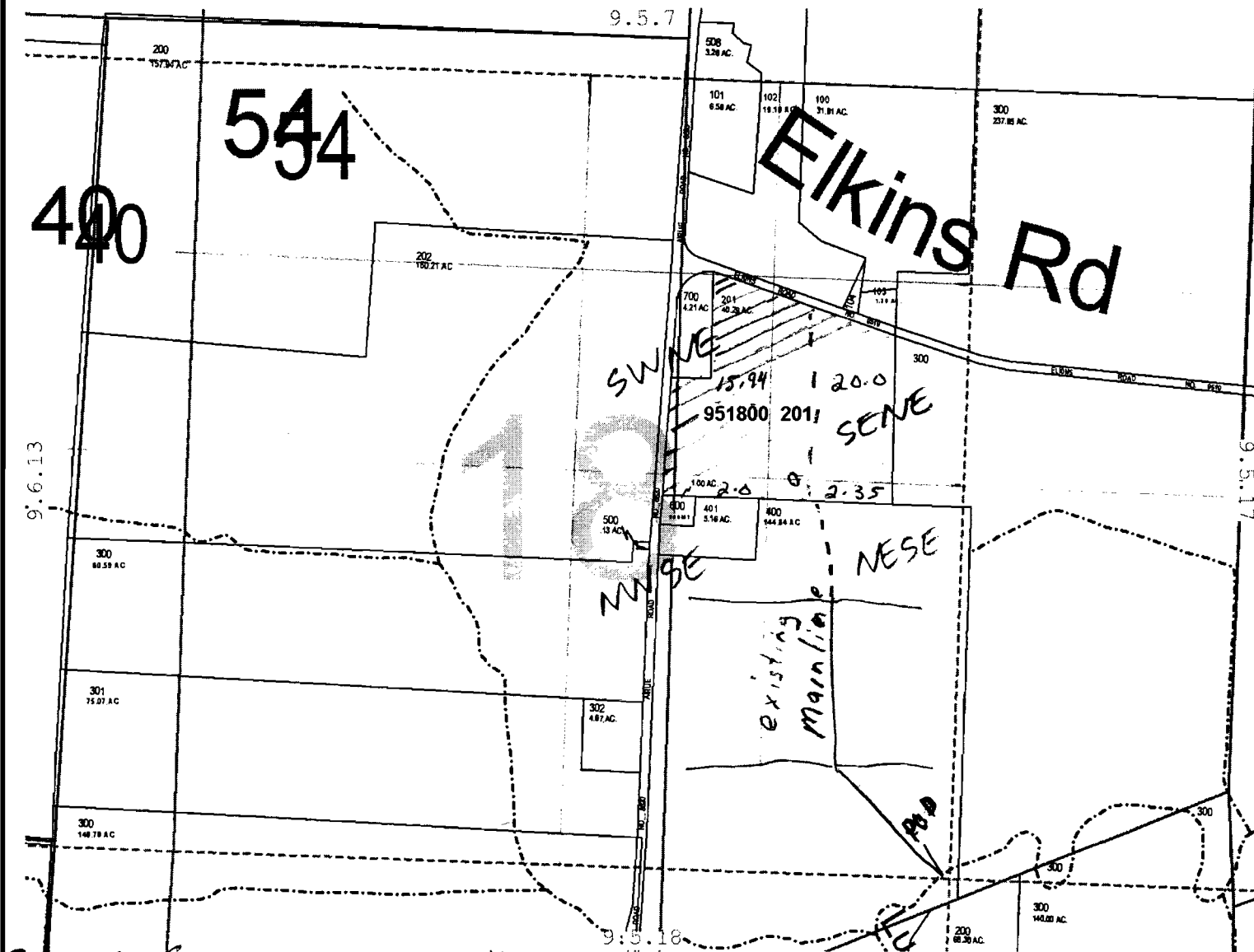
S-86964

McGuire Property

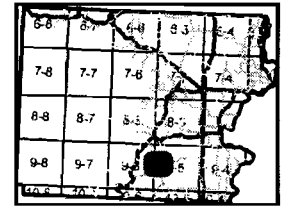
Polk County Map

9.5.18

-  DLC
-  Section
-  Taxlot07
-  Taxlot Arrows07
-  Taxlot Boundary3
-  taxlot07
-  Water



RECEIVED
 APR 29 2007
 WATER RESOURCES DEPT
 SALEM, OREGON

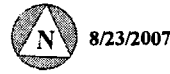


Same as Johnson C#45961

The POD NE $\frac{1}{4}$ NE $\frac{1}{4}$, as projected within D. Lewis DLC 55, section 19 T. 9 S, R 5 W, W.M., 910 feet North and 1700 feet east from the SW Corner, D. Lewis DLC 55

This map was produced using the Polk County GIS data. The GIS data is maintained by the county to support its governmental activities. The county is not responsible for map errors, omissions, misuse or misinterpretation.

1 in. = 1000 ft.



S-86964

The POD is located 20' north and 100' west from the SE corner of section 18