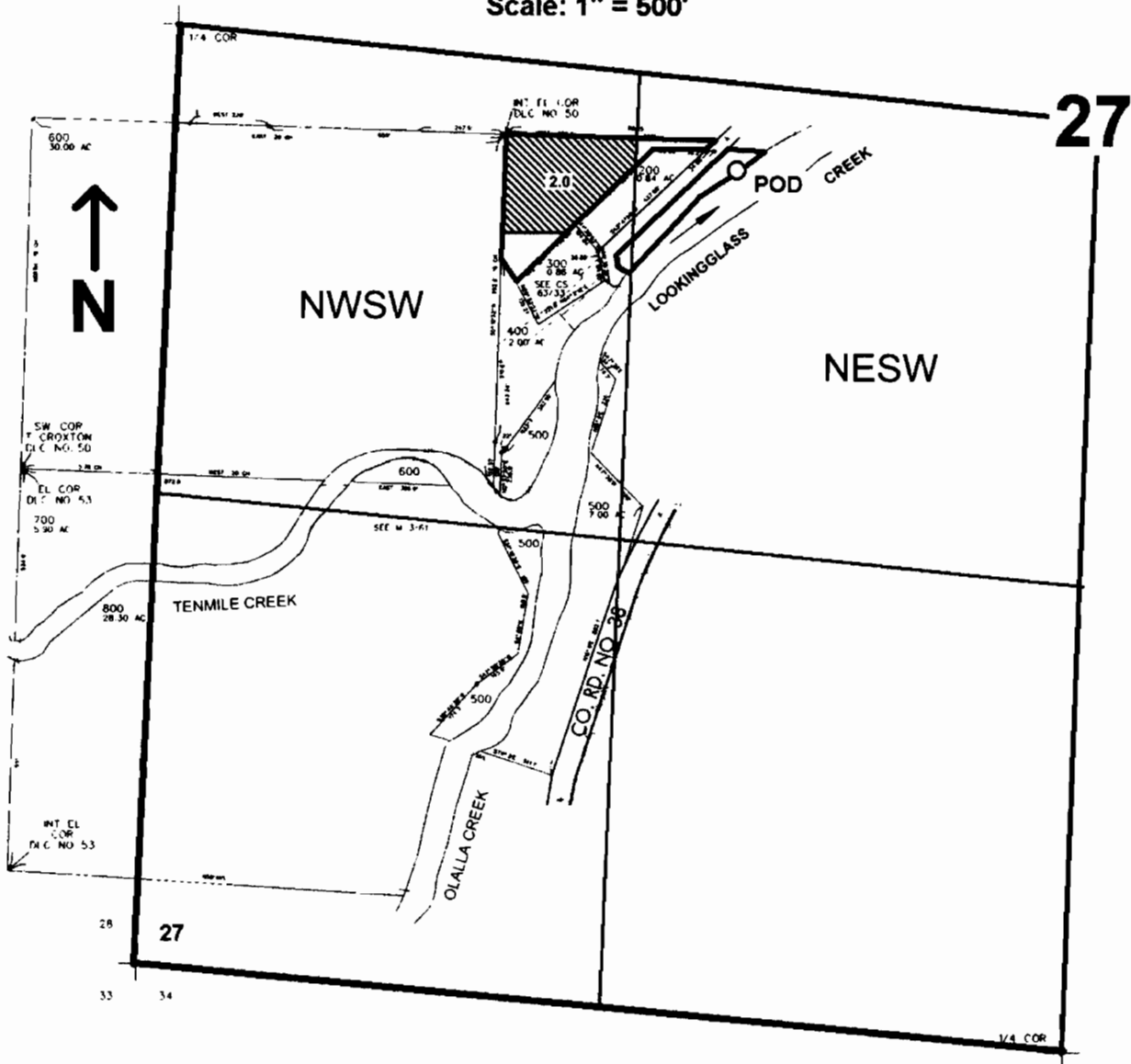


SW1/4 SEC. 27 T.28S. R. 7W W.M.
 DOUGLAS COUNTY
 Scale: 1" = 500'



POD is located 175 ft. S. and 1010 ft. W. from the center of Sec. 27

RECEIVED

JUN 24 2008

WATER RESOURCES DEPT
 SALEM, OREGON

App No S-87206