

Corrected Adjusted
 Acres. P.C.E.
 1" = 600 FT.








P.O.D. LOCATED FROM
 CENTER SECTION 14
 T6S R5W
 1100 FE NORTH
 0 FE WEST

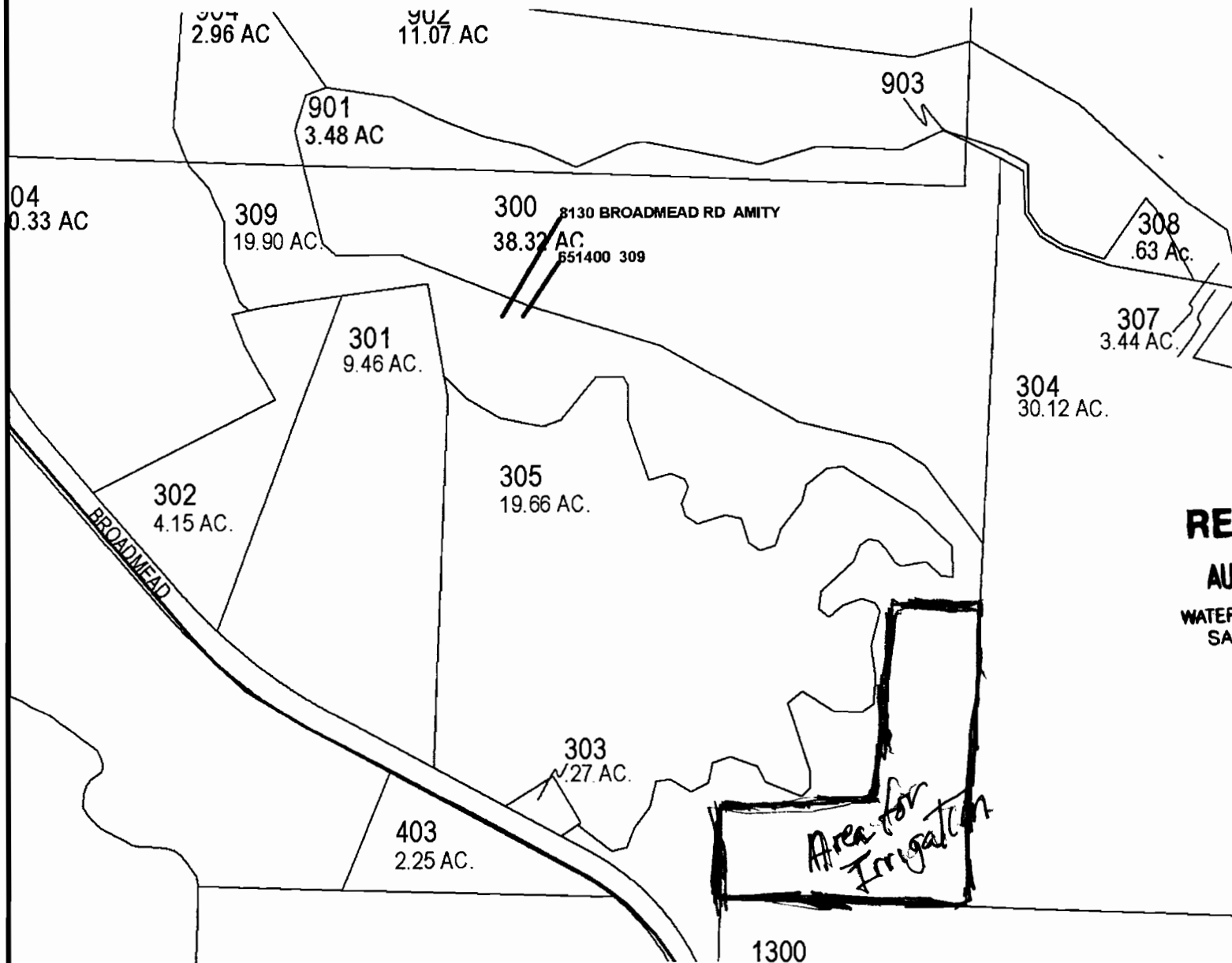
DAVID Aug 4, 2008
FINAL PROOF SURVEY

24552 21652
 R-24551 R-1405

Polk County Map

6.5.14

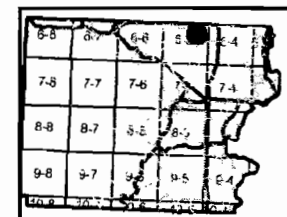
-  Roads
-  CO-PAVED
-  Taxlot08
-  Taxlot Arrows08
-  Taxlot Boundary4
-  taxlot08
-  Updates



RECEIVED

AUG 04 2008

WATER RESOURCES DEPT
SALEM, OREGON



This map was produced using the Polk County GIS data. The GIS data is maintained by the county to support its governmental activities. The county is not responsible for map errors, omissions, misuse or misinterpretation.

App No S-87270

1 in. = 350 ft.



8/1/2008

