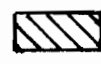




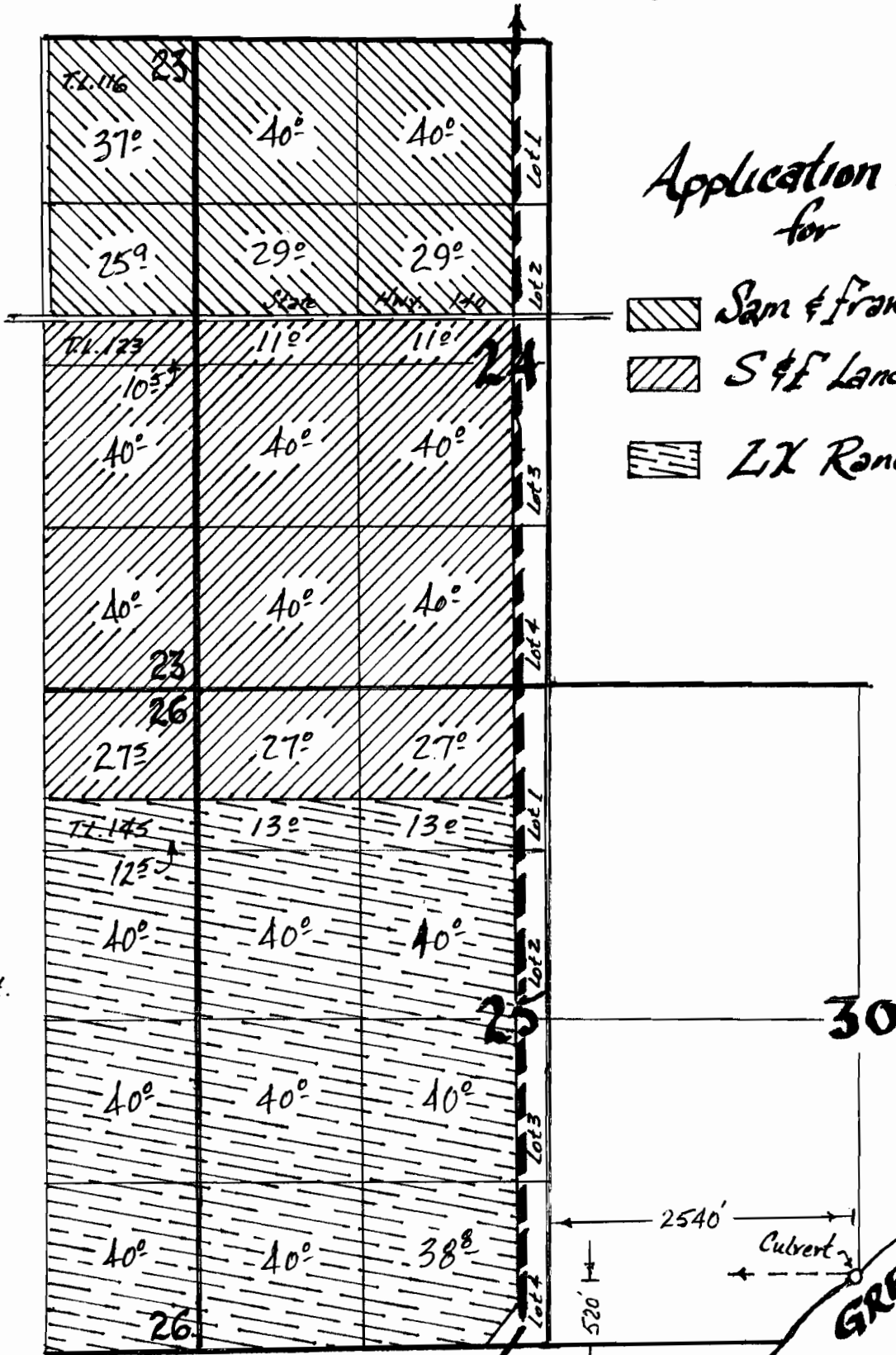
T 39 S, R 24 & 25 E, W.M.

Application Map
for

-  Sam & Frances Farr,
-  S & F Land & Cattle Co.,
-  LX Ranch

N

1" = 1320 ft.



RECEIVED

DEC 12 2006

WATER RESOURCES DEPT
SALEM, OREGON

R. 24 E.
R. 25 E.

APR 8/05