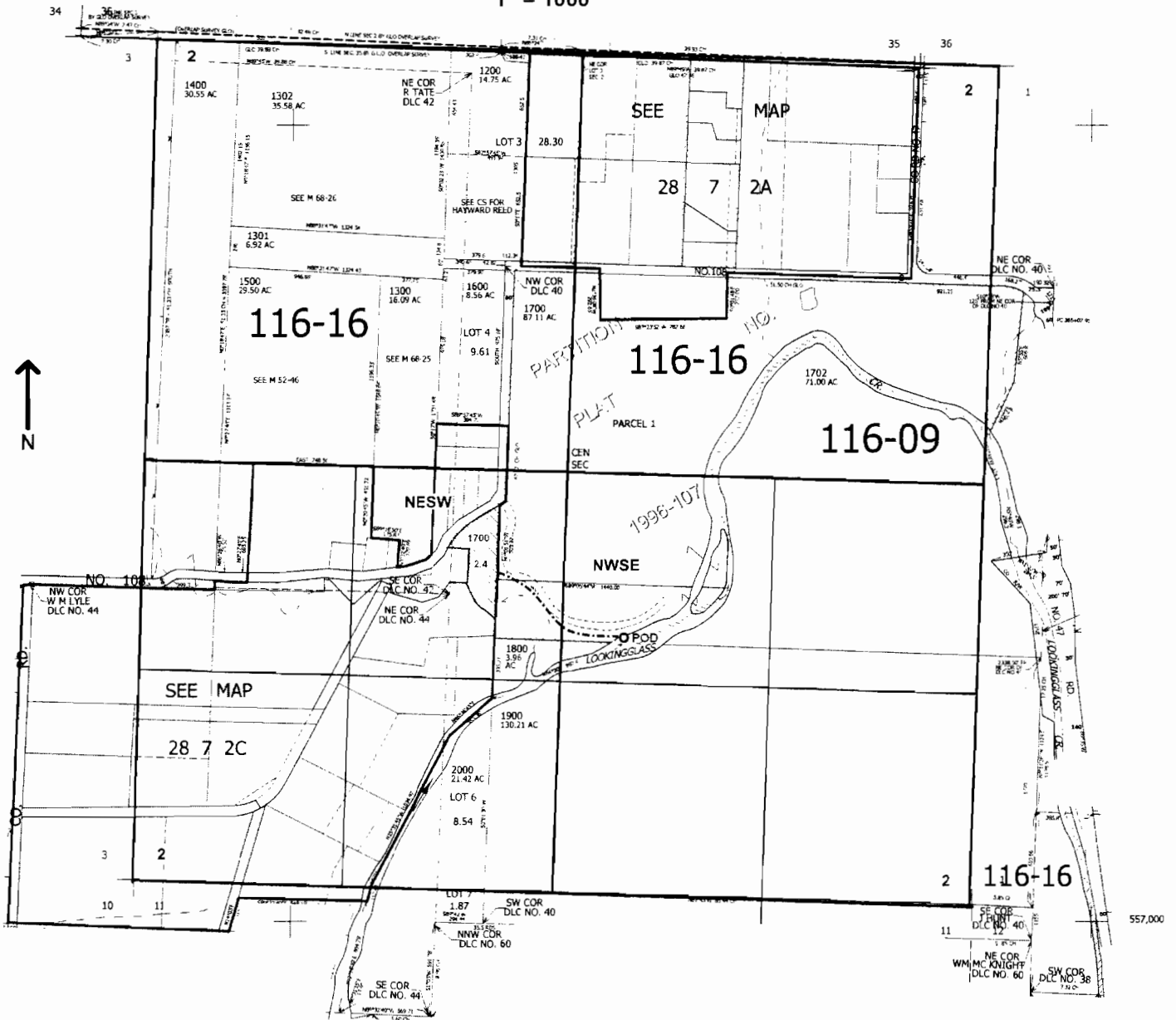


SEC.2 T.28S. R.7W. W.M.  
DOUGLAS COUNTY  
1" = 1000'



POD: 1620 ft. N. 2200 ft.. W. from the SE corner of Sec. 2

RECEIVED

JUN 23 2008

WATER RESOURCES DEPT.  
SALEM, OREGON

App No S-87204